

Baruch College 2020-2021 AFFIRMATIVE ACTION PLAN

Affirmative Action Plans covering Minorities and Women (Executive Order 11246), Individuals with Disabilities (Section 503) and Protected Veterans (VEVRAA)

Mona Jha, Responsible Official for reporting period June 1, 2019–May 31, 2020

Contact:

Kenya Lee, Chief of Staff
One Bernard Baruch Way
NY, NY 10010

Please contact Kendrell Lawson at x4538 if you need assistance with reading this document due to a disability.

This plan is available for review at:
Newman Library - Baruch College
151 E 25th St, New York, NY 10010



Table of Contents

PART ONE: INTRODUCTION AND BACKGROUND	4
OVERVIEW	5
Location, Degrees, Accreditation	5
History	6
Mission	6
ORGANIZATION CHART	6
RELEVANT POLICIES	6
Equal Opportunity and Non-Discrimination Policy	7
Affirmative Action Policy	7
Sexual Misconduct Policy	8
Other Policies	9
RESPONSIBILITY FOR IMPLEMENTATION	9
The President	9
Chief Diversity Officer	10
Officials	10
Committee on Diversity and Inclusion	10
University Management	11
IMPACT OF 2020 EVENTS	11
PART TWO: DATA AND ANALYSIS	12
DATA SOURCES	12
Employee Data	12
Self-Identification Categories	13
Labor Market Source Data	13
WORKFORCE ANALYSIS	14
JOB GROUPS, DISCIPLINES, AND MARKET DATA	14
Job Groups	14
Disciplines	16
Labor Market Availability	16
UTILIZATION ANALYSIS	17
Utilization, Underutilization, and Placement Goals	19
OTHER ANALYSES	20
Personnel Activity	20
Recruiting Activity	21
Civil Service Hiring	22
PART THREE: ACTION-ORIENTED PROGRAMS	23

PRIOR-YEAR PROGRAMS	24
Summary of Campus Programs, 2019-2020	24
2020-2021 PLANNED PROGRAMS	25
Planned Campus Programs, 2020-2021	25
ONGOING ACTIVITIES	27
INTERNAL AUDIT AND REPORTING	28
APPENDICES	30

Appendices follow this document and pages, numbered separately.

PART ONE: INTRODUCTION AND BACKGROUND

This report is an annual update of the Affirmative Action Plan (AAP) for federal contractors. This unit is one of CUNY's 28 Affirmative Action establishments. The US Department of Labor's Office of Federal Contract Compliance Programs (OFCCP) oversees Affirmative Action Plan requirements for federal contractors. Some aspects of this plan also reflect state and local regulations, guidelines for public entities, and resolutions of the CUNY Board of Trustees. In particular, this plan reflects requirements for implementing:

- Presidential Executive Order 11246, for women and federally protected racial/ethnic groups
- Vietnam Era Veterans' Readjustment Assistance Act of 1974, as amended, for protected Veterans
- Section 503 of the Rehabilitation Act of 1973, as amended, for Individuals with Disabilities.

The plan reflects the following timeframes:

Employee Census Date:	June 1, 2020
Reporting Year:	June 1, 2019–May 31, 2020
Program Year:	September 1, 2020–August 31, 2021.

Given this year's disruptions due to the 2020 COVID-19 outbreak, we experienced challenges in implementing last year's plan and in completing this year's plan, as discussed later in this report.

These hyperlinks provide highlights:

- [Impact of 2020 Events](#)
- [Summary of Workforce by Job Group; Summary by Tenure Status](#)
- [Summary of Underutilization and Goals](#)
- [Action-Oriented Programs for Females and Minorities](#)
- [Hiring Rates, Individuals with Disabilities and Veterans](#)
- [Planned Outreach for Individuals with Disabilities and Veterans](#)

This Plan is available for public review as described on the title page.

We produce a separate Affirmative Action Plan for Italian Americans. CUNY's Chancellor designated Italian Americans as a protected group in 1976.

Web links, confirmed as of June 2020, are subject to change.

OVERVIEW

Location, Degrees, Accreditation

Baruch College is within easy reach of Wall Street, Midtown, and the global headquarters of major companies and non-profit and cultural organizations, giving students unparalleled internship, career, and networking opportunities. The College's more than 18,000 students, who speak more than 110 languages and trace their heritage to more than 160 countries, have been repeatedly named one of the most ethnically diverse student bodies in the United States. The College is ranked as the best public college in the nation for value according to the Wall Street Journal/Times Higher Education and was ranked second on CNBC's public university list of 50 U.S. colleges that pay off the most. In addition, the College is one of the nation's top four-year higher education institutions that successfully promotes upward economic and social mobility among its lower-income students, according to the Brookings Institution.

The College is comprised of three Schools: (a) THE GEORGE AND MILDRED WEISSMAN SCHOOL OF ARTS AND SCIENCES. Weissman School has more than 50 areas of study that blend rigorous theory with practical experience. Degrees include the BA, BS, MA, MS, and PhD, (b) THE AUSTIN W. MARXE SCHOOL OF PUBLIC AND INTERNATIONAL AFFAIRS prepares students for careers in government and nonprofit sector, offering programs leading to BSPA, MPA, Executive MPA, MIA, and MS in Education degrees while serving as a resource for governmental and nonprofit entities at the local, state, and national levels, and (c) THE ZICKLIN SCHOOL OF BUSINESS has renowned faculty experts across the business spectrum and acclaimed AACSB-accredited programs leading to BBA, MBA, MS, Executive MBA and MS, and PhD degrees.

Baruch College's nationally recognized, award-winning library, the William and Anita Newman Library, houses a collection that includes over 300,000 print volumes, 500,000 eBook titles, and over two million units of microform. The Library's collection of electronic resources includes several hundred online databases, accessible from nearly 100 PC workstations.

In addition, Baruch College is home to a number of centers and institutes including the Lawrence N. Field Center for Entrepreneurship, the Robert Zicklin Center for Corporate Integrity, the Wasserman Trading Floor/Subotnick Financial Services Center, the Center for the Study of Business and Government, the Weissman Center for International Business, the Baruch College Survey Research Unit, the Steven L. Newman Real Estate Institute, the Bernard L. Schwartz Communication Institute, and the Baruch Performing Arts Center (BPAC). The College's Division of Continuing and Professional Studies (CAPS) offers numerous work-related programs and training courses, many of which can lead to certificates in Business, Real Estate, Bookkeeping, Human resources and Information Technology. Comprehensive modern languages and English as a Second Language courses are also offered. Courses in Continuing and Professional Studies are taught by professionals in the fields.

The award-winning Newman Vertical Campus features state-of-the-art classrooms, computer and research laboratories, auditoriums, a recreation and fitness center, conference rooms, faculty offices, a performing arts center, a bookstore, and a food

History

Tracing its routes to the founding of the Free Academy in 1847, Baruch College is part of the nation's first tuition free institution of higher education. In 1919, the School of Business and Civic Administration was established, and in 1953 the College was named in honor of Bernard M. Baruch, benefactor, statesman, financier, and alumnus of the Free Academy. In 1968 Baruch College was established as an independent senior college of the City University of New York. US News & World Report, Forbes, and The Princeton Review, among others, rank Baruch College among the top colleges in the United States. Today, Baruch College enrolls more than 18,000 students representing over 168 countries; its student body continues to be named one of the most ethnically diverse in the United States. It also has 13 varsity NCAA Division III sports teams on campus.

Mission

Baruch College provides an inclusive, transformational education in the arts and sciences, business, and public and international affairs to students from New York and around the world and creates new knowledge through scholarship and research. A Baruch education is a financially accessible and powerful catalyst for the social, cultural, and economic mobility of students and a strong foundation for lifelong learning and community impact. Our distinguished undergraduate and graduate academic programs offer extraordinary value. Our diverse and outstanding faculty and staff are themselves lifelong learners, who continue to develop their expertise as teachers and administrators, augment their success as scholars and practitioners and exercise their talent as creators of art and facilitators of student success.

ORGANIZATION CHART

Appendix A displays an organization chart.

RELEVANT POLICIES

As a unit of The City University of New York (CUNY), we adhere to federal, state, and city laws and regulations on non-discrimination and affirmative action, including: Executive Order 11246, as amended, Titles VI and VII of the Civil Rights Act of 1964, Title IX of the Education Amendments of 1972, Sections 503 and 504 of the Rehabilitation Act of 1973 and the Americans with Disabilities Act of 1990, Section 402 of the Vietnam Era Veterans'

Readjustment Assistance Act of 1974, as amended, the Equal Pay Act of 1963, the Age Discrimination in Employment Act of 1967, as amended, the Age Discrimination Act of 1975, New York State Human Rights Law and New York City Human Rights Law.

Protected groups, delineated in Executive Order 11246 and updates are American Indian or Alaska Native, Asian, Black or African American, Hispanic or Latino, Native Hawaiian or Other Pacific Islander, Two or More Races, and Women. Additionally, the Chancellor of CUNY designated Italian Americans as a protected group in 1976 and CUNY prepares a separate Italian American Affirmative Action Plan.

CUNY posts its policies on non-discrimination, sexual misconduct, and affirmative action on its website:

[Click for CUNY's Policies \(https://www.cuny.edu/about/administration/offices/hr/policies-and-procedures.html\)](https://www.cuny.edu/about/administration/offices/hr/policies-and-procedures.html)

Equal Opportunity and Non-Discrimination Policy

The City University of New York (“University” or “CUNY”), located in a historically diverse municipality, is committed to a policy of equal employment and equal access in its educational programs and activities. Diversity, inclusion, and an environment free from discrimination are central to the mission of The University.

It is the policy of The University—applicable to all colleges and units— to recruit, employ, retain, promote, and provide benefits to employees (including paid and unpaid interns) and to admit and provide services for students without regard to race, color, creed, national origin, ethnicity, ancestry, religion, age, sex (including pregnancy, childbirth and related conditions), sexual orientation, gender, gender identity, marital status, partnership status, disability, genetic information, alienage, citizenship, military or veteran status, status as a victim of domestic violence/stalking/sex offenses, unemployment status, or any other legally prohibited basis in accordance with federal, state and city laws.

It is also The University’s policy to provide reasonable accommodations to applicants, employees and other persons on the basis of disability, religious practices, pregnancy or childbirth-related medical conditions, or status as victims of domestic violence/stalking/sex offenses.

This Policy also prohibits retaliation for reporting or opposing discrimination, or cooperating with an investigation of a discrimination complaint.

Affirmative Action Policy

CUNY’s original Affirmative Action Policy of May 28, 1985 is part of its Manual of General Policy.

ARTICLE V FACULTY, STAFF AND ADMINISTRATION

Policy 5.04 - Affirmative Action:

RESOLVED, that the Board of Trustees of The City University of New York reaffirms its commitment to affirmative action and directs the Chancellery and the colleges to reemphasize the taking of the positive steps that will lead to recruiting, hiring, retaining, tenuring, and promoting increased numbers of qualified minorities and women. (Board of Trustees Minutes, 1985-05-28, Section 6-C)

Sexual Misconduct Policy

CUNY's Policy on Sexual Misconduct addresses sexual harassment, gender-based harassment and sexual violence. It outlines procedures applicable to students and employees for addressing complaints.

CUNY students, employees and visitors deserve the opportunity to live, learn and work free from Sexual Misconduct. Accordingly, CUNY is committed to:

- 1. Defining conduct that constitutes Sexual Misconduct;*
- 2. Providing clear guidelines for students, employees and visitors on how to report incidents of Sexual Misconduct;*
- 3. Providing ongoing assistance and support to all parties after allegations of Sexual Misconduct have been made;*
- 4. Promptly and respectfully responding to and investigating allegations of Sexual Misconduct, pursuing disciplinary action when appropriate and taking action to investigate and address any allegations of retaliation;*
- 5. Providing awareness and prevention information on Sexual Misconduct, including widely disseminating this Policy, as well as a "Students' Bill of Rights" and implementing training and educational programs on Sexual Misconduct to college constituencies;*
- 6. Gathering and analyzing information and data that will be reviewed in order to improve safety, reporting, responsiveness and the resolution of allegations of Sexual Misconduct;*
- 7. Distinguishing between the specific conduct defined as Title IX Sexual Harassment by the USDOE and the broader definition of Sexual Misconduct prohibited by this Policy; and*
- 8. Ensuring compliance with the federal regulations under Title IX, and other federal, state and local laws.*

This is CUNY's sole policy to address Sexual Misconduct and it is applicable at all CUNY colleges and units.

Other important policies are available using the links below.

[CUNY Campus and Workplace Violence Policy](#) addresses workplace violence.

[CUNY Domestic Violence and the Workplace Policy](#) addresses domestic violence in or affecting employees in the workplace.

[CUNY Procedures for Implementing Reasonable Accommodations and Academic Adjustments](#) addresses CUNY process for responding to requests for reasonable accommodations or academic adjustments.

CUNY campuses also report crime statistics, including statistics relating to sexual violence under the federal Jeanne Clery Act. Information is available from the Baruch's Department of Public Safety's website <https://www.baruch.cuny.edu/psafety/index.html>

Other Policies

It is our policy to recruit, employ, retain, promote, and provide benefits to employees and to admit and provide services for students without regard to race, color, national or ethnic origin, religion, age, sex, sexual orientation, gender identity, marital status, disability, genetic predisposition or carrier status, alienage, citizenship, military or veteran status, unemployment status or status as victim of domestic violence.

Management reaffirms the non-discrimination policy annually. The most recently released reaffirmation letter, issued on (date), is shown in **Appendix B**.

RESPONSIBILITY FOR IMPLEMENTATION

While the entire community participates in promoting diversity and inclusion, we have assigned certain responsibilities.

The President

The President, S. David Wu, oversees Affirmative Action and diversity programs to assure compliance with federal, state, and city laws, rules and regulations and university policies, and:

- Designates personnel to manage Affirmative Action, diversity, and compliance efforts, including a Chief Diversity Officer (CDO), 504/Americans with Disabilities Act (ADA) Coordinator and Title IX Coordinator
- Ensures responsible personnel have authority, staffing, and other resources to fulfill their assigned responsibilities
- Communicates a commitment to equal employment opportunity and issues an annual reaffirmation in support of affirmative action, diversity and equal opportunity

- Approves and releases required reports, including this Affirmative Action Plan.

Chief Diversity Officer

As of this writing the President has designated Kenya lee as the acting Administrator in Charge and Responsible Official who:

- Provides confidential consultation for, investigates and resolves discrimination/harassment complaints
- Distributes relevant policies, notices and revisions, and assures integration into training programs, search committee orientations, websites, and other media
- Evaluates the impact of Affirmative Action programs and initiatives
- Prepares and communicates Affirmative Action Plan reports
- Consults with hiring teams and managers on recruitment and selection, overseeing recruitment plans and effective recruitment/selection strategies to promote a diverse workforce
- Participates in CUNY initiatives promoting diversity and inclusion.

Officials

Executives, department chairpersons, managers, and supervisors are critical partners in Equal Employment and Affirmative Action programs. They help ensure compliance with regulations and policies, foster an inclusive environment, and help develop and implement the Affirmative Action Plan.

Committee on Diversity and Inclusion

A standing committee advises the President on diversity and affirmative action, reviews the impact of policies on the governance plan, develops and implements strategic diversity plans, and promotes programs to reflect pluralistic values and goals.

Co-Chairs

Sam Johnson, Professor, Psychology

Leslie Ann Hunt, Director of Graduate Programs, Weissman School of Arts and Sciences

Members

Andrea Caviness, Executive Director of Human Resources

Cristina Balboa, Associate Professor, Marx School of Public and International Affairs

Dakshatha Daggala, Undergraduate Student Representative
Damali Tolson, Director of Student Life
Kenya N. Lee, Chief of Staff
Kristy Perez, Director SEEK
Patria De Lancer Julnes, Associate Dean of Academic Programs and Professor
Patricia Fleming Director for Student Disability Services
Paquita Davis Friday, Senior Associate Dean, Zicklin School of Business
Rachel Fester, Assistant Provost for Assessment, Accreditation and Institutional Effectiveness
Robert Kunicki, Assistant Director for Student Success, Assessment, & Enrollment Initiatives
Rosa Kelley, Director of International Student Services
Samuel Johnson, Chair, Baruch College Faculty Senate
Scott Newbert, Professor of Management and Academic Director, Lawrence N. Field Center for Entrepreneurship

University Management

CUNY's Office of Recruitment and Diversity (ORD) establishes job groups and other report parameters and prepares summary statistics. ORD also reports summary statistics and sponsors several university-wide diversity programs. [Click here for link \(www2.cuny.edu/about/administration/offices/hr/recruitment-diversity/\)](http://www2.cuny.edu/about/administration/offices/hr/recruitment-diversity/).

IMPACT OF 2020 EVENTS

On March 15, 2020, Chancellor Felix Matos-Rodriguez announced CUNY campuses and non-essential personnel were transitioning to remote learning and working for the remainder of the academic year. As of summer, 2020, this arrangement is still in place. The transition and resulting shifts in priorities affect the university's operations in many ways, including personnel practices. We have cancelled or postponed some hiring plans. We have limited or cancelled public events and other campus activities that we could not conduct remotely.

Certain practices have continued unchanged, such as the listing of job vacancy announcements with workforce agencies. The Chief Diversity Officer has continued to work remotely on:

- Complaint intake and investigation
- Accommodations for Individuals with Disabilities
- Recruitment advertising and outreach
- Oversight of hiring, advancement and separation practices
- Consulting to management.

As of this writing, it is difficult to set placement goals or plan action-oriented programs, as we have not finalized operational and personnel plans.

Further information is available on the CUNY website at: [CUNY Coronavirus info: https://www.cuny.edu/coronavirus/](https://www.cuny.edu/coronavirus/).

PART TWO: DATA AND ANALYSIS

We analyze workforce data as mandated through multiple methods that promote a complete assessment:

- Workforce Analysis (employees within organizational units)
- Establishment of job groups and academic disciplines
- Development of labor market availability measures
- Utilization Analysis for job groups and disciplines
- Review of Personnel Actions (e.g., Hiring, Separation, Promotion)
- Review of Recruitment Activities
- Review of Civil Service Hiring
- Review of Compensation.

Details are available from the US Department of Labor's Office of Contract Compliance Programs (OFCCP) at: [OFCCP site: https://www.dol.gov/ofccp/regs/compliance/ofcccomp.htm](https://www.dol.gov/ofccp/regs/compliance/ofcccomp.htm) (*Educational Institutions Technical Assistance Guide*).

DATA SOURCES

Employee Data

On June 30, 2020, we extracted data on full-time active employees employed as of June 1, 2020 from CUNY's system of record, CUNYfirst. We included individuals on most paid leaves, including medical leave and fellowship/sabbatical leave. We did not include individuals on terminal leaves such as retirement leave, student workers (including Graduate Assistants) or individuals employed separately by CUNY's Research Foundation.

We invite employees to self-identify gender, race/ethnicity, veteran status, and disability status. Employees may update selections at any time on an Employee Self-Service portal. We last conducted a self-identification canvas in May 2018 via email. We provided an FAQ document to explain the reasons for collecting this data, and stressed that providing it is voluntary. We plan to conduct the next canvas in the upcoming year.

We also invite job applicants to self-identify on the job application portal.

Self-Identification Categories

We use the following categories to evaluate representation by race/ethnicity for this plan:

- Total Minorities (all groups other than White, reported as a single category)
- Asian (consolidates Asian, Hawaiian, and Other Pacific Islander)
- Black/African American
- Hispanic/Latino
- White (not a protected group).

American Indian/Alaska Native and Two or More Races are included under Total Minorities but not separately reported.

If a person identifies as both Hispanic/Latino and some another group, they are recorded as Hispanic/Latino, and not as Two or More Races.

Consistent with long-standing agreements, we ask employees to self-identify Italian American status, and create a separate Italian American Affirmative Action Plan.

To retain overall comparisons to individuals in federal categories and to prevent double counting, Italian Americans are not included in Total Minorities in either plan. If individuals indicate both Italian American and federally protected ethnicity categories, we default to the federally protected category, to prevent double counting.

We use federally mandated gender categories of male and female for purposes of this plan. Our system captures non-binary general identification, but only individuals identifying as “female” are included in the federally protected gender category.

Of 1,217 employees, all employees identified a gender, and 2 employees did not identify a valid race/ethnicity category. Anyone who did not specify a gender and/or ethnicity is included in the Workforce Analysis but not assigned to a protected group, 696 employees did not identify a Veteran status and 1089 did not identify a Disability status. Disability and Veteran status are priorities for future self-identification campaigns.

Labor Market Source Data

We compare the employee population with the Labor Market from which CUNY would reasonably recruit, train, or promote, by job group. CUNY re-calculates availability every other year, most recently in 2019. Data sources include:

- For internal candidates, employee appointments CUNY-wide over 2016-2017 and 2017-2018 for weighting and feeder jobs, applied to the June 1, 2018 employee census.
- For external candidates, US Census American Community Survey (ACS), 5-year estimate, 2013-2017 (final), specifically, extracted from University of Minnesota’s Public User Microdata Sample (iPUMS).

- For faculty discipline-based estimates: US Department of Education’s National Center for Education Statistics’ Integrated Post-Secondary Education Data System (IPEDS) completion data, 2015-2016 (final); evaluated by Classification of Instructional Programs (CIP), most often at two-digit level (major category).

WORKFORCE ANALYSIS

In Workforce Analysis, we reviewed representation of females and minorities by division, department and title, to evaluate diversity by organizational unit rather than job group. We review the data organized by job title in order of rank or salary grade. We also review professorial faculty by tenure status within department. Due to length, Workforce Analysis charts are not included here.

613 or 50.37% of employees (staff and faculty) identify themselves as female and 604 or 49.63% identify themselves as male.

- Of the above employees who identify themselves as female, 353, or 29% identify themselves as belonging to one of the “minority” groups.
- Of the above employees who identify themselves as male, 285, or 23.42% identify themselves as belonging to one of the “minority” groups.
- The total number of those who identify themselves in the “minority” group as females exceed those who identify themselves as males in the “minority” group by 68.
- 638 or 52.42 % identify themselves as belonging to one of the “minority” groups and 526, or 43.22% identify themselves as being “White” (and not “Italian”). Thus, the total number of employees who identify themselves as being part of a “minority” group exceed the number of employees who identify themselves as being “White” (and not “Italian”) by 112.
- 51 or 4.19% of the staff identify themselves as Italian American; 22 or 43.14% of those in this group, identify themselves as female and 29 or 56.86% as males.

JOB GROUPS, DISCIPLINES, AND MARKET DATA

Job Groups

Except for the Workforce Analysis, we analyze data by groups of jobs with similar duties, qualifications, and other conditions of employment. CUNY establishes job groups and reviews them annually, as detailed in [Appendix C](#). A major input is the federal Standard Occupational Classification (SOC) system. We further organize job groups into categories based on federal EEO-1 categories.

The next two pages provide a summary of staffing by job group, followed by a summary of professorial faculty by rank and tenure status.

Workforce Summary by Job Group and Category (June, 2020)

Baruch College

Total Employees: 1,217

Executive/Administrative/Managerial

Job Group	Staff	Female #	Female %	Minority #	Minority %	Italian Am. #	Italian Am. %
Administration 1 (Chief Executive)	1	0	0.0%	0	0.0%		
Administration 1 (Executive)	33	18	54.5%	11	33.3%	3	9.1%
Administration 2 (Manager)	152	108	71.1%	67	44.1%	11	7.2%
Facility Manager	1	0	0.0%	0	0.0%		
IT Computer Manager	3	0	0.0%	3	100.0%		
Security Manager	3	1	33.3%	3	100.0%		

Professional Faculty

Job Group	Staff	Female #	Female %	Minority #	Minority %	Italian Am. #	Italian Am. %
Faculty-Professorial	424	165	38.9%	134	31.6%	18	4.2%
Faculty-Librarian	22	10	45.5%	10	45.5%	2	9.1%
Faculty-Lecturer	61	25	41.0%	14	23.0%	7	11.5%

Professional Non-Faculty

Job Group	Staff	Female #	Female %	Minority #	Minority %	Italian Am. #	Italian Am. %
Accountant	5	5	100.0%	4	80.0%		
Administration 3 (Professional)	207	152	73.4%	144	69.6%	4	1.9%
Administration 5 (Engineer-Architect)	2	0	0.0%	2	100.0%		
IT Computer Professional	26	7	26.9%	23	88.5%		

Administrative Support Workers

Job Group	Staff	Female #	Female %	Minority #	Minority %	Italian Am. #	Italian Am. %
Accountant Assistant	6	5	83.3%	5	83.3%		
Administrative Assistant	20	16	80.0%	14	70.0%		
Office Assistant	44	40	90.9%	32	72.7%	3	6.8%
Mail Services Worker	3	1	33.3%	3	100.0%		

Craft Workers

Job Group	Staff	Female #	Female %	Minority #	Minority %	Italian Am. #	Italian Am. %
Basic Crafts-Buildings and Grounds	10	0	0.0%	6	60.0%	1	10.0%
Laborers and Helpers	2	0	0.0%	1	50.0%	1	50.0%
Skilled Trades-Supervisor	3	0	0.0%	1	33.3%		
Skilled Trades	18	0	0.0%	3	16.7%	1	5.6%

Technicians

Job Group	Staff	Female #	Female %	Minority #	Minority %	Italian Am. #	Italian Am. %
Administration 4 (College Lab Tech)	7	5	71.4%	3	42.9%		
Broadcast/Media	3	0	0.0%	3	100.0%		
IT Support Technician	1	1	100.0%	1	100.0%		

Service Workers and Others

Job Group	Staff	Female #	Female %	Minority #	Minority %	Italian Am. #	Italian Am. %
Campus Public Safety Sergeant	11	2	18.2%	10	90.9%		
Campus Peace Officer	36	11	30.6%	36	100.0%		
Campus Security Assistant	29	10	34.5%	27	93.1%		
Custodial Supervisor	12	2	16.7%	11	91.7%		
Custodial	72	29	40.3%	67	93.1%		

Summary for Professorial Rank Faculty by Title and Tenure Status (June, 2020)

Baruch College

Total Professorial Faculty: 424

Status categories are: Tenure, Track Tenure, Substitute, and "Instructors or Others PSC" which applies to titles where tenure status is not given.

Title	Ttl Empls	Female #	Female %	Minority #	Minority %	ItalAm #	ItalAm %
Visiting Professor	1	1	100.0%	0	0.0%	0	0.0%
Visiting > = 50%	1	1	100.0%	0	0.0%	0	0.0%
Asst Professor	124	52	41.9%	61	49.2%	2	1.6%
Substitute >=6 Mo Or Prior Ben	4	3	75.0%	1	25.0%	0	0.0%
Tenured	6	1	16.7%	2	33.3%	1	16.7%
Track Tenure	114	48	42.1%	58	50.9%	1	0.9%
Assc Professor	129	55	42.6%	45	34.9%	7	5.4%
Tenured	126	54	42.9%	43	34.1%	7	5.6%
Track Tenure	3	1	33.3%	2	66.7%	0	0.0%
Professor	164	54	32.9%	28	17.1%	9	5.5%
Tenured	164	54	32.9%	28	17.1%	9	5.5%
Dist Professor	6	3	50.0%	0	0.0%	0	0.0%
Instructors and others PSC	6	3	50.0%	0	0.0%	0	0.0%

Disciplines

For College Laboratory Technicians, we evaluate disciplines by assigning departments to either a Scientific/Engineering/Technical group or a General group. [Appendix D](#) lists these assignments. This past year, there were no material changes to the discipline assignments.

Labor Market Availability

Labor Market Availability is an estimate used to benchmark utilization of protected groups, by job group. It represents the proportion of each protected group available for employment in the labor market from which CUNY recruits (both internally and externally). CUNY typically reviews Labor Market Availability every other year and did not revise estimates this year. The appendices listed above provide the basis for each calculation. We utilize the following factors:

Weighting of Internal/External Labor Market

The internal labor market is university-wide and currently reflects the full-time employee population. We produce a weighted estimate based on 2016-2017 and 2017-2018 job moves of CUNY employees. We also identify typical feeder jobs and other conditions, such as permanency status.

Geography

We base geographic factors on both CUNY policy and actual hiring experience.

- National labor market for Administration 1 (Executive), Faculty–Professorial, and Faculty–Instructor.
- Two-state region (New York and New Jersey) for Faculty-Lecturer. IPEDS completion data is only available by State and recruiting is regional rather than national.
- New York State-only labor market where New York State residency is required by statute:
 - College Security Assistant
 - Campus Peace Officer
 - Campus Public Safety Sergeant
 - Security Manager.
- New York/New Jersey Metropolitan Statistical Area (MSA) for remaining job groups. A review of hires in 2018-2019 indicated 98.6% of new hires in these groups reside within this MSA. This area represents a large and highly diverse population.

Qualifications – Other than Collegiate Faculty

- Occupational Group: Standard Occupational Classifications assigned to every job title, matched to Census Occupational Codes.

- Degree Requirements: the minimum requirement for the lowest-ranked job in each job group. These range from none through Master’s level.
- Experience: where there is a requirement for a specific number of years of experience, we used age as a proxy, utilizing US Census standards; for example, a Bachelor’s degree assumes a standard age of 21, and a Bachelor’s degree plus four years of experience would correspond to a minimum age of 25.

Qualifications – Collegiate Faculty - Italian American Plan

As discipline-specific data is not available for Italian American ancestry, we do not analyze faculty by discipline. We utilize American Community Survey data, which contains ancestry information. Respondents may provide up to two ancestries. They may identify as Italian American exclusively or in combination with another ancestry. Categories for Italian American ancestry are Italian (051) and Sicilian (068). The agreed-upon calculation is:

- 100% of the first response (e.g., “Italian”, then “Irish” is counted at 100%)
- 50% of the second response (e.g., “Irish”, then “Italian” is counted at 50%)
- Individuals answering as both Italian and Sicilian, or either Italian or Sicilian with no other choice, are counted at 100%.

UTILIZATION ANALYSIS

We compare female and total minority utilization with the estimated labor market by job group. We also evaluate utilization for the major federal ethnicity categories (Asian, Black/African American, and Hispanic/Latino) and Italian American.

There must be at least five incumbents in order to evaluate a job group. Analyzing groups of less than 30 employees may generate less reliable results than those with larger populations. The President’s position reports outside of our establishment and is not included.

We report underutilization where the percent of individuals in a protected group is less than 80% below labor market estimate and the difference is equal to at least one full-time equivalent employee.

We consider job groups and disciplines for which there is underutilization as priorities for placement goals and enhanced outreach when there are hiring opportunities.

Appendix E details utilization/underutilization in each category (job group and/or academic discipline).

Small year-to-year variations in underutilization arise from a combination of changes in availability, hires, advancements, and separations. It is usually not possible to pinpoint a

single, direct cause. In job groups with small numbers of employees, numbers may change substantially even with a change in only one employee.

The following pages summarize staffing and underutilization for each job group.

**Exhibit: Summary of Historical Changes in Underutilization -Staff/College Lab Tech (Italian American Plan) 2020 - 2021
Baruch College**

This is a summary of underutilization of protected groups by Job Group, organized by EEO Category. Only those Job Groups with five or more staff are reported.

This summary provides three measurements:

-2018: Underutilization reported in the 2018 - 2019 plan (i.e., based on employee census as of 6/1/2018, the the Labor Market Availability estimates in place at that time).

-2019: Underutilization reported in the 2019 - 2020 (i.e., based on employee census as of 6/1/2019, with the current Labor Market Availability estimates, in place at that time).

-2020: Underutilization reported in the 2020 - 2021 Plan (i.e., this plan).

Note changes were made to job groups for security staff in 2019. 2018 figures reflect the prior organization (job groups named CPO-1 and CPO-2) and the 2019 figures reflect the new organization (Campus Security Assistant and Campus Peace Officer). The prior CPO-1 group contained Campus Security Assistant and Campus Peace Officer Level 1 only and CPO-2 contained Campus Peace Officer Level 2 only). The new groups are Campus Security Assistant and CPO (both CPO-1 and CPO-2 titles).

Category: Executive/Administrative/Managerial		UNDERUTILIZATION						
		Total Staff	Female	Total Minority	Asian/NatH aw./Oth. Pac. Isl.	Black/ African Am.	Hispanic/ Latino	Italian American
Administration 1 (Executive)								
2020	33							
2019	33							1
2018	30					2		
Administration 2 (Manager)								
2020	152							4
2019	155				7			4
2018	153							
Category: Professional Non-Faculty		UNDERUTILIZATION						
		Total Staff	Female	Total Minority	Asian/NatH aw./Oth. Pac. Isl.	Black/ African Am.	Hispanic/ Latino	Italian American
Accountant								
2020	5					2		0
2019	6					2		0
2018	6					1	1	
Administration 3 (Professional)								
2020	207							22
2019	199							21
2018	190							17
IT Computer Professional								
2020	26	4						2
2019	25	4						2
2018	25							3

Exhibit: Summary of Historical Changes in Underutilization -Staff/College Lab Tech (Italian American Plan) 2020 - 2021
Baruch College

Category: Administrative Support Workers

		UNDERUTILIZATION						
		Total Staff	Female	Total Minority	Asian/NatH aw./Oth. Pac. Isl.	Black/ African Am.	Hispanic/ Latino	Italian American
Accountant Assistant								
2020	6							1
2019	7							1
2018	6							1
Administrative Assistant								
2020	20							1
2019	21						1	1
2018	23						2	
Office Assistant								
2020	44							5
2019	53							6
2018	61							7

Category: Craft Workers

		UNDERUTILIZATION						
		Total Staff	Female	Total Minority	Asian/NatH aw./Oth. Pac. Isl.	Black/ African Am.	Hispanic/ Latino	Italian American
Basic Crafts-Buildings and Grounds								
2020	10	2			1			
2019	12	2			1	1		
2018	9	2						
Skilled Trades								
2020	18	0	5			2	3	2
2019	23		7			3	4	1
2018	24		3		1	2		2

Category: Technicians

		UNDERUTILIZATION						
		Total Staff	Female	Total Minority	Asian/NatH aw./Oth. Pac. Isl.	Black/ African Am.	Hispanic/ Latino	Italian American
Administration 4 (College Lab Tech) - Sci/Tech/Eng								
2020	5						1	1
2019	5						1	1

Category: Service Workers and Others

		UNDERUTILIZATION						
		Total Staff	Female	Total Minority	Asian/NatH aw./Oth. Pac. Isl.	Black/ African Am.	Hispanic/ Latino	Italian American
Campus Peace Officer								
2020	36				2			6
2019	34				2			5

Campus Peace Officer (2018-CPO Level 1)

Exhibit: Summary of Historical Changes in Underutilization -Staff/College Lab Tech (Italian American Plan) 2020 - 2021
 Baruch College

Category: Service Workers and Others

		UNDERUTILIZATION						
		Total Staff	Female	Total Minority	Asian/NatH aw./Oth. Pac. Isl.	Black/ African Am.	Hispanic/ Latino	Italian American
Campus Peace Officer (2018-CPO Level 1)								
2018	58							7
Campus Peace Officer (2018-CPO Level 2)								
2018	6	0		0				0
Campus Public Safety Sergeant								
2020	11			1				0
2019	10	1		0				0
2018	12	2		1				0
Campus Security Assistant								
2020	29							2
2019	33							3
Custodial								
2020	72							5
2019	77							6
2018	76							6
Custodial Supervisor								
2020	12	2		1				1
2019	10			1				1
2018	11	1		0				1

Baruch College

This is a summary of underutilization, of protected groups by faculty Job Group. Only those groups with five or more faculty are reported.

This summary provides three measurements:

-2018: Underutilization reported in the 2018 - 2019 plan (i.e., based on employee census as of 6/1/2018, the the Labor Market Availability estimates in place at that time).

-2019: Underutilization reported in the 2019 - 2020 (i.e., based on employee census as of 6/1/2019, with the current Labor Market Availability estimates, in place at that time).

-2020: Underutilization reported in the 2020 - 2021 Plan (i.e., this plan).

Notes:

-Librarians are now reported in a separate Job Group. In 2018 they were reported with Professorial faculty.

Faculty-Lecturer

		UNDERUTILIZATION					
	Total Staff	Female	Total Minority	Asian/NatH aw./Oth. Pac. Isl.	Black/ African Am.	Hispanic/ Latino	Italian American
2020	61	7	5	7			
2019	61		5	7			2
2018	56	8		3		1	

Faculty-Librarian

		UNDERUTILIZATION					
	Total Staff	Female	Total Minority	Asian/NatH aw./Oth. Pac. Isl.	Black/ African Am.	Hispanic/ Latino	Italian American
2020	22	8					
2019	21	7					

Faculty-Professorial

		UNDERUTILIZATION					
	Total Staff	Female	Total Minority	Asian/NatH aw./Oth. Pac. Isl.	Black/ African Am.	Hispanic/ Latino	Italian American
2020	424						
2019	428						
2018	437	47			23		

Utilization, Underutilization, and Placement Goals

Appendix E reports that the following faculty disciplines and professional non-faculty categories have no underutilization:

Job groups where there is no underutilization (Italian Americans)

Faculty	Staff
There is no underutilization of Italian Americans in the Faculty-Professorial, Faculty-Librarian and Faculty-Lecturer job groups.	Administration 1 (Executive) Accountant Basic Crafts-Buildings and Grounds Campus Public Safety Sergeant

Reductions in underutilization (Changes from 2019 – 2020)

Faculty	Staff
In the Faculty-Lecturer job group, the underutilization of Italian Americans was reduced from 2 to 0.	<p>In the Administration 1 (Executive) job group, the underutilization of Italian Americans was reduced from 1 to 0.</p> <p>In the Office Assistant job group, the underutilization of Italian Americans was reduced from 6 to 5.</p> <p>In the Campus Security Assistant job group, the underutilization of Italian Americans was reduced from 3 to 2.</p> <p>In the Custodial job group, the underutilization of Italian Americans was reduced from 6 to 5.</p> <p>Appendix E reports that there is no underutilization in the Administration 2 (Executive) job group. In total, 108 of the 152 employees in this job group are females. In addition, 67 of the 152 employees are minorities. The underutilization of Black/African Am. was reduced from 7 to 0.</p> <p>In the Basic Crafts-Buildings and Grounds job group, the underutilization of Black/African Am. was reduced from 1 to 0.</p>

	<p>In the Skilled Trades job group, the underutilization of Black/African Am. was reduced from 3 to 2 and Hispanic/Latino from 4 to 3.</p>
--	--

OTHER ANALYSES

Personnel Activity

We review personnel actions for adverse impact (selections at substantially different rates for different groups). Chief Diversity Officers review activity for all job groups and report results for those groups with a material number of actions and/or applicants.

Appendix F provides net changes by job group:

- Job Actions by Gender and Ethnicity
- Faculty Tenure Actions by Gender and Ethnicity.

To analyze net changes by job group, we compare employee title changes between two reference dates (June 1, 2019 and June 1, 2020). We note hires, moves to a higher or lower job group, moves within a job group, and separations. This produces a reasonable estimate but may leave out some actions, such as an employee changing job groups more than once over the year.

Employees who leave one job group to take a position in another are reported as separated from one group and joining another. We consider transfers between CUNY units as a separation from one and a hire in the other.

Tenure is a permanent status granted to professorial faculty and College Laboratory Technicians. Lecturers are eligible for a similar status, Certificate of Continuous Employment (CCE). Individuals are eligible after meeting service requirements. For professorial faculty, there are additional reviews resulting in tenure recommendations to the President. We may hire some senior faculty with tenured status.

Appendix F provides details of faculty receiving tenure/CCE status effective during the past plan year, covering those awarded tenure, hired with tenure (includes faculty rehired after long-term leaves), and denied tenure.

Appendix F-2 reports a total of 10 faculty members who have received tenure effective September 1, 2019. Out of the 10 faculty members, 9 gained tenure while 1 was hired with tenure. Among the 9 faculty members who gained tenure 5 were Asian/Nat.Haw./Other Pac. In addition, 4 of

the faculty who gained tenure were female. The 1 faculty member who was hired with tenure was Asian/Nat.Haw./Other Pac.

Recruiting Activity

CUNY is committed to equitable practices to recruit a diverse and highly qualified workforce.

Prior to posting a job vacancy, the Chief Diversity Officer reviews Physical and Mental Qualifications and posting language in general. The Chief Diversity Officer also reviews Recruiting Plans for intended outreach.

We conduct most faculty and administrative hiring by appointing a diverse Search Committee. The Chief Diversity Officer provides an orientation, or “charge”, to committee members on effective selection practices, including practices aimed at reducing potential for bias. The Chief Diversity Officer reviews applicant pools for sufficient representation and certifies pools prior to committee review, and reviews selections again as searches near completion.

Federal guidelines state adverse selection may occur when any one group (protected or not) has a selection rate less than 80% of the selection rate of the most-selected group.

Appendix G summarizes recruiting and selection by job group for searches concluded with a job offer between June 1, 2019 and May 31, 2020.

We report all searches resulting in an offer. For some searches, notably faculty, there is a time gap between offer and start dates. To avoid a lag in reporting, we include searches based on date of accepted job offer, even if the employee has not started work before June 1.

As per federal *Internet Applicant* guidelines, we consider an “applicant” to be someone who applies to a specific opening, has the minimum qualifications, is considered, and does not withdraw. We analyze applicant pools and selection rates for interviews, offers, and hires.

The Chief Diversity Officer reviews applicant self-identification data and determines if there is a need to adjust recruiting and outreach plans.

In the previous year, we made 2 exception hires through a Search Waiver process. These hires represent situations where extraordinary circumstances made it highly unlikely we could fill the position competitively. We also grant waivers for positions representing a transfer of funding sources only. The Chief Diversity Officer and university management approve waiver applications.

There was an increase in the number of applicants that applied to positions at Baruch this year compared to the previous year. There were 537 more applicants this year compared to 2018 – 2019, despite there being 18 less job openings.

	2019-2020	2018-2019	2017-2018
Total number of job openings	60	68	167

Total number of jobs filled	59	65	130
Total number of applicants for all jobs	5,056	3,935	17,442
Total number of applicants hired	63	67	152

This section was amended to include 10 additional hires for the reporting period. This was due to delays in the entering of closing dates in the CUNYfirst system.

Civil Service Hiring

We participated in 3 university-wide hiring pools for Classified Civil Service vacancies. Applicants who are pre-qualified based on an examination score indicate their interest in working at one or more units, and each establishment interviews and hires according to Civil Service regulations. We report those applicants expressing an interest in our unit at the hiring pools. CUNY’s Office of Human Resources Management administers and validates Civil Service examinations and maintains records of applicants and exam results.

Campus Peace Officer Exam 4 hires 9/4/2019

CUNY Office Assistant Exam 2 hires 9/9/2019

Painter Exam 1 hire 2/24/2020

PART THREE: ACTION-ORIENTED PROGRAMS

This section provides a qualitative assessment of prior-year goal attainment and details efforts aimed at achieving next year's goals.

Part Three contains:

- Prior-Year Programs
- 2020-2021 Planned Programs
- Ongoing Activities
- Internal Audit and Reporting.

PRIOR-YEAR PROGRAMS

Last year, we undertook the following to support Affirmative Action and create a climate of inclusion:

Summary of Campus Programs, 2019-2020

Program	Impact/Job Group
<p>Dionne Ford, co-editor of Slavery’s Descendants: Shared Legacies of Race and Reconciliation: The contributors to the book tell their stories of dealing with America’s racial past through their experiences and their family histories. Some are descendants of slaveholders, some are descendants of the enslaved, and many are descendants of both slaveholders and the enslaved. They share a commitment for critical discussion and thinking about our nation’s history of oppression and its impact and their quest to achieve a vision of a just and truth society that acknowledges the past and seeks to heal.</p>	<p>All of the listed programs helped foster a climate of inclusion. Furthermore, some of the programs help inform the campus community about racial justice and fairness issues.</p>
<p>Film Screening, True Justice: An HBO documentary that features the work of Bryan Stevenson, founder and director of the Equal Justice Initiative, an organization committed to ending mass incarceration and excessive punishment. This is a fitting sequel to Netflix’s 13th documentary, which we featured last year.</p>	
<p>Mix and Mingle, Black Male Initiative: (BMI) staff invites all faculty and staff to connect with the BMI staff to explore opportunities for partnership and collaborations.</p>	
<p>Challenging Historical Adversities Today: An educational dialogue about</p>	

Program	Impact/Job Group
anti-blackness ideologies in the Latinx community.	
<p>Latinos Profesionales: Latinx professionals from various fields will discuss what it is like to be Latinx in the work environment. Co-sponsored by the Office of Alumni Relations and Volunteer Engagement and the Starr Career Development Center</p>	
<p>LGBTQ and Allies Meet and Greet: An event to network with faculty, staff, alumni, and students. To help foster and further develop a supportive and inclusive community at Baruch.</p>	
<p>LGBTQ+ Alumni and Employer Event: The Starr Career Development Center and the Office of Alumni Relations and Volunteer Engagement, are hosting a professional event focusing on the experiences of being LGBTQ+ in the workplace. This event will feature a panel of professionals and employers.</p>	
<p>Transgender Day of Remembrance: Join us as we remember and celebrate those who have been killed by transgender based violence. Learn about what you can do to support those impacted.</p>	

2020-2021 PLANNED PROGRAMS

In this section, we affirm placement goals and key initiatives.

Planned Campus Programs, 2020-2021

Program	Expected Impact/Job Group
<p>1st Generation Thriving COVID-19: An event on how Latinx professionals improved their careers and built opportunities through these unprecedented times. This event is sponsored by the Office of Student Life.</p>	<p>All of the listed programs will help foster a climate of inclusion. Furthermore, some of the programs help inform the campus community about racial justice and fairness issues.</p>
<p>How to be a Jefa: An event discussing empowerment and entrepreneurship as we talk to Latina business owners! They'll be sharing tips and tricks and insight on starting your own business while sharing their journey to becoming the successful Jefas (female bosses) they are today. This event is sponsored by the Office of Student Life.</p>	
<p>dwb (driving while black): A virtual presentation by Opera Omaha and the Baruch Performing Arts Center. A taut, 50-minute music-theatre work about racism, erasure, and the fear that black parents experience when they send their kids out into a world that too often sees them not as a child, but as a threat. This powerful music-drama documents the all-too-familiar story of an African American parent whose beautiful brown boy approaches driving age, and what should be a celebration of independence and maturity turns out to be fraught with the anxiety of "driving while black."</p>	
<p>Learning Chinese Through Music: This virtual lecture will introduce the groundbreaking approach of learning Chinese through song, created by Hong Zhang. This lecture will be composed of three parts: the benefits of learning Chinese through song; basic singing techniques, including posture, breathing, voice projection, and legato singing; steps and methods of learning Chinese songs, including song style, articulation, song interpretation and expression. The lecture will be highly engaging and interactive. Audience will do some vocalizations and</p>	

Program	Expected Impact/Job Group
<p>learn a few Chinese songs as a practice of the techniques introduced in the lecture. This event is sponsored by the Confucius Institute for Global Finance.</p>	
<p>LGBTQ+ Professionals Panel: A discussion with professionals across various fields and disciplines. The is sponsored by the Office of Student Life.</p>	
<p>Sandra Kahn Wasserman Jewish Studies Center Art Exhibit: An art exhibit regarding the “13 Driver’s Licenses,” with Lisa Salko.</p>	
<p>So You Want to Talk about Race: A session of book talks sponsored by the Office of Diversity, Compliance and Equity Initiatives and Professor Elizabeth Merrick.</p>	
<p>CURB Meetings: The Baruch "Coalition to Undo Racism at Baruch" is a monthly meeting for administrators, faculty and staff who have attended the Undoing Racism Workshop and wish to continue connecting about the workshop and anti-racist work on campus.</p>	

ONGOING ACTIVITIES

CUNY’s headquarters Office Human of Resources Management:

- Lists job vacancies with State Workforce Agencies and Veterans’ centers
- Maintains consolidated advertising programs, including job boards serving Veterans, Individuals with Disabilities, women, and protected minorities
- Maintains social media accounts for recruitment and employment branding
- Advertises and administers Civil Service examinations

- Distributes training materials on effective recruiting and selection
- Provides training and updates to Chief Diversity Officers.

CUNY implemented an on-line training program for faculty and staff on sexual harassment prevention; we regularly review training records and follow-up with individuals who have not participated.

Recruitment policies support diverse applicant pools through:

- Required posting of open positions and of Civil Service Notices of Exam; typical faculty vacancies are posted for 30-60 days and administrative vacancies are posted for 14-30 days
- Collecting applications in a single system where pre-established screening practices may be applied
- Inviting candidates to self-identify race/ethnicity, gender, veteran status, and disability status when applying; data is kept confidentially and used to analyze applicant pools
- For many positions, a diverse Search Committee evaluates candidates according to consistent, job-related criteria.

INTERNAL AUDIT AND REPORTING

The Chief Diversity Officer posts and distributes notices of policies, new/revised regulations, and similar compliance information, and makes the Affirmative Action Plan available for public inspection. He/she also integrates compliance information into training programs for faculty, students, and staff.

The Chief Diversity Officer's responsibilities for audits and reviews include

- Monitoring personnel actions, including new hires, transfers, promotions, and terminations
- Monitoring employee self-identification programs
- Reviewing recruiting outreach and advertising
- Monitoring complaints/incident reports which may indicate underlying trends
- Reviewing personnel practices and the Affirmative Action Plan with management
- Advising management of program effectiveness and providing recommendations for

improvement.

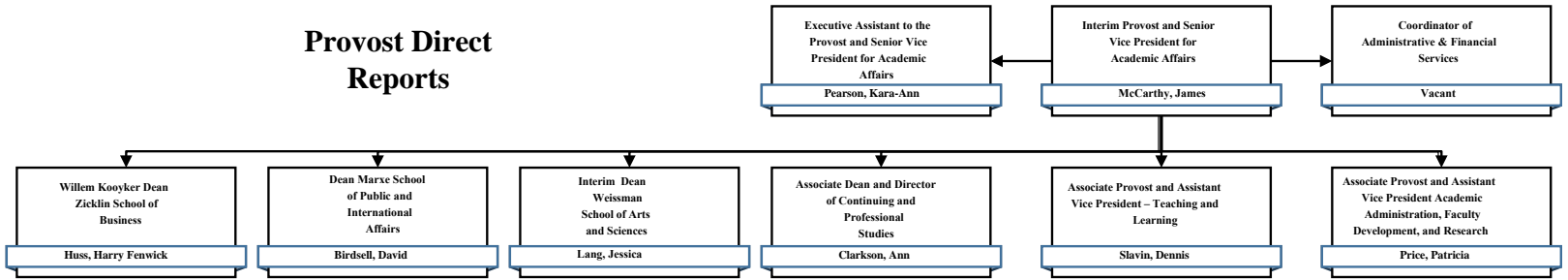
The Chief Diversity Officer works with the Human Resources function to assure employment records, including records in CUNYfirst (HR Information System) are complete, accurate, and up-to-date.

APPENDICES

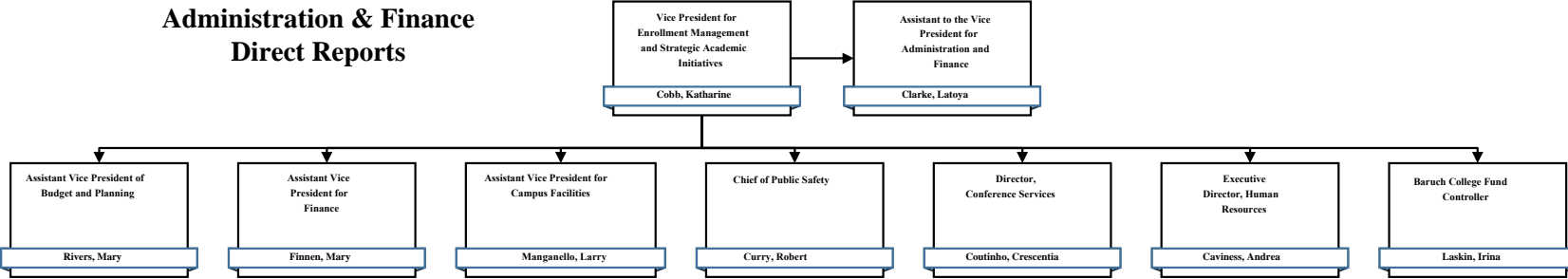
- A. SUMMARY ORGANIZATION CHART
- B. RE-AFFIRMATION LETTER
- C. JOB GROUPS AND LABOR MARKET AVAILABILITY
- D. ACADEMIC DEPARTMENTS BY DISCIPLINE AND COLLEGE LAB TECHNICIAN CATEGORY
- E. UTILIZATION ANALYSIS (ADMINISTRATORS AND STAFF, COLLEGE LAB TECHNICIANS, FACULTY)
- F. SUMMARY OF PERSONNEL ACTIVITIES
- G. SUMMARY OF RECRUITMENT ACTIVITIES

This Appendix provides a high-level organization chart.

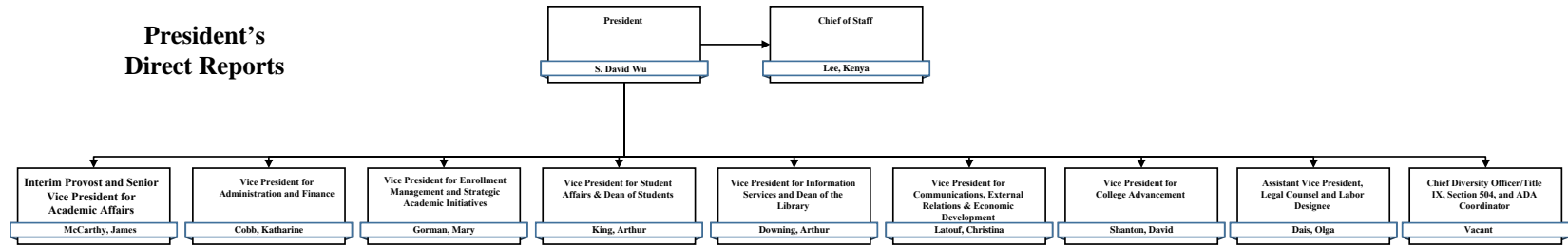
Provost Direct Reports



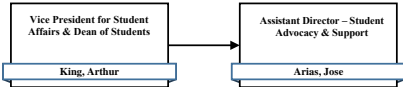
Administration & Finance Direct Reports



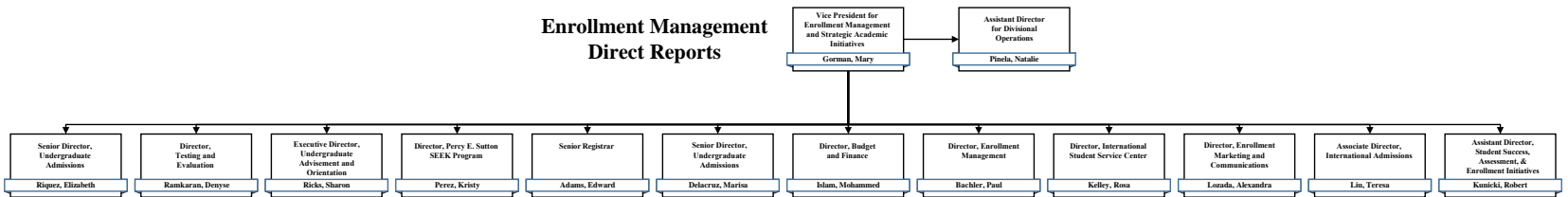
President's Direct Reports



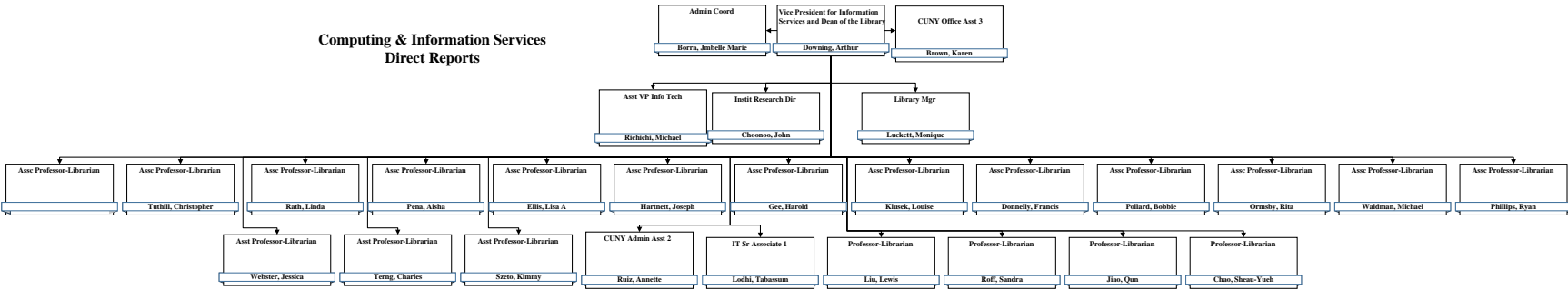
Student Affairs Direct Reports



Enrollment Management Direct Reports

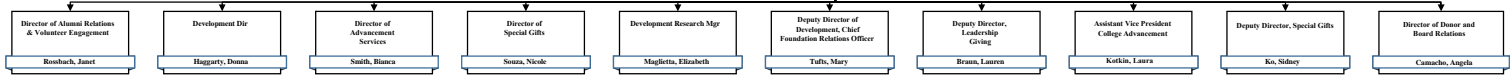


**Computing & Information Services
Direct Reports**

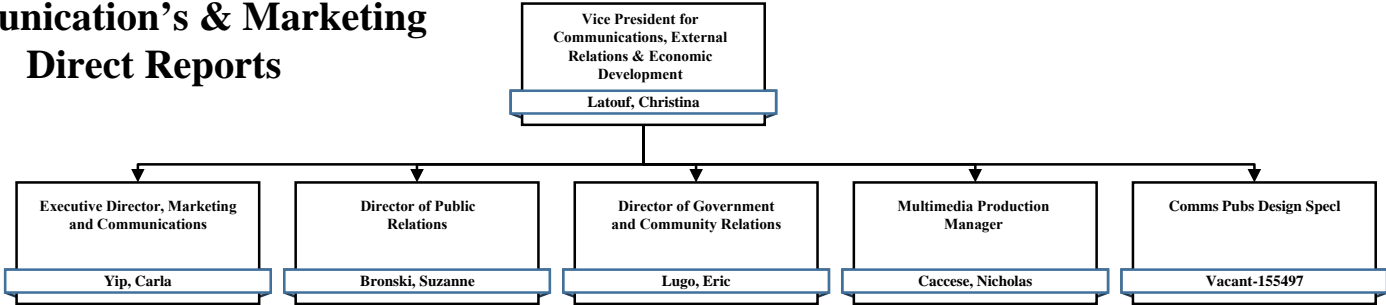


College Advancement Direct Reports

Vice President for
College Advancement
Shanton, David



Communication's & Marketing Direct Reports



**Zicklin School of Business
Direct Reports**

Willem Kooyker Dean
Zicklin School of
Business
Hoon, Harry Feawick

Senior Associate Dean,
Administration and
Finance
Davis-Friday, Paqulita

Interim Associate Dean,
Academic Affairs and
Innovation
Mohan, Kannan

Associate Dean for
Executive Education
Webb, Gowindyn

Assistant Dean for
Graduate Enrollment
Harley, Simon

Bert W. Wasserman
Department of
Economics and
Finance Chair
Wang, Jun / Jonathan

Paul H. Chook Department of
Information Systems and
Statistics
Chair
Koufaris, Marios

Department of
Law Chair
Wattick, Valerie

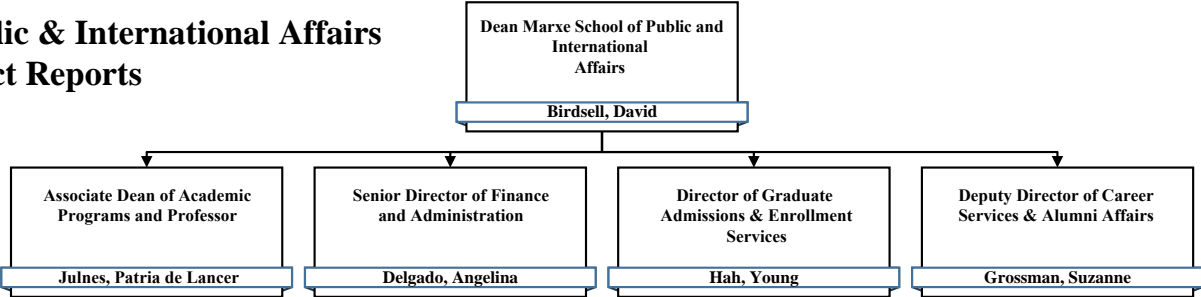
Narendra Paul
Lounsbury Department
of Management Chair
Veral, Emre

Sian Ross
Department of
Accountancy
Chair
Marquardt, Carol

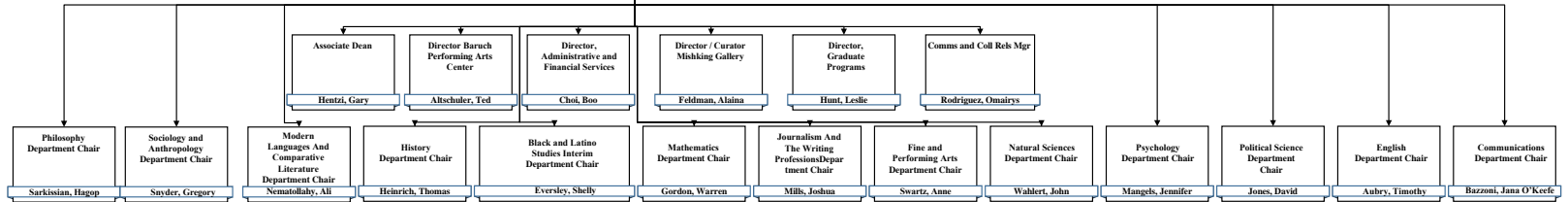
Allen G. Aaronson
Department of Marketing &
International Business Chair
Eyuboglu, Nermin

Real Estate
Department Chair
Yildirim, Yildirim

Marxe School of Public & International Affairs Direct Reports



Weissman School of Arts & Sciences Direct Reports



Baruch College

This Appendix contains information on the most recently distributed reaffirmation(s).

Message from the President

January 27, 2020

Reaffirmation of Commitment to Diversity/Inclusion/Equal Opportunity/Affirmative Action

To the Baruch College Community:

Baruch College, as a leading element of The City University of New York (CUNY), has a long-standing commitment to diversity and equal opportunity. Our students, faculty, and staff have dedicated themselves to cultivating an inclusive community, and we appreciate those efforts. We acknowledge that there is more work to be done as we seek to build a diverse workforce and student body, and further nurture a culture of inclusion and respect.

Baruch is located in New York City, the center of a vibrant and pluralistic community. Our diversity and inclusion efforts acknowledge the need for the open exchange of ideas and production of knowledge that is essential to the continued growth of our society and to our students' success in our multicultural community where differing values are made known and are respected. Ensuring the continued diversity of the faculty, staff, and student body requires active efforts in recruitment and retention and promoting a climate of openness and participation.

The [*Baruch College Strategic Plan: 2018-23*](#) outlines the priorities of the Baruch College community. Goal Number Five specifically states "Elevate and embed the principles of diversity, equity, inclusion and cultural competency throughout the College."

New Presidential Advisory Council on Diversity and Inclusion

To further this goal, we have created a Presidential Advisory Council on Diversity and Inclusion (PACDI) with representative membership of the faculty, staff, students and administration. This new council will serve as a consultative body to the president on issues of diversity and inclusion and is charged with supporting Baruch in assessing and enhancing a diverse and respectful campus community. Please visit the [Advisory Groups webpage](#) to learn more about the PACDI and view its membership.

Compliance Monitoring and Discrimination Issues

Mona Jha, Esq., Chief Diversity Officer for the College, carries the responsibility for implementing and monitoring of our compliance program. Any individual who believes that she or he has experienced discrimination should immediately contact Ms. Jha at Diversity@baruch.cuny.edu or 646-312-4540; she is located in Newman Hall, 137 East 22 Street, Room 204. She additionally serves as the Title IX Coordinator and Section 504/ADA Coordinator. The provosts, vice presidents, deans, directors, managers, and supervisors all share responsibility for ensuring our compliance with these policies and laws.

I invite you to visit the policies section of our website to view the [Equal Opportunity Policy](#) in its entirety, including the complaint procedures and prohibition against retaliation. I also encourage you to continue to work to ensure equal opportunity, affirmative action, and diversity and inclusion in all aspects at Baruch College as we nurture a culture of respect and cultural competence.

Sincerely,

Mitchel B. Wallerstein
President

BaruchCOLLEGE

CUNY The City
University
of
New York

Baruch College

This report lists those CUNY job groups for which the college has employees. Labor Market Availability factors (LMA) are listed for each group. LMA Factor 1 is the external Labor Market measure. LMA Factor 2 is an internal factor for employees who could be recruited or promoted into the group based on historical data for CUNY overall).

Groups with fewer than five employees are listed here but will not be included in Utilization Analysis worksheets. Individuals in the Chief Executive role are not included in this report.

Titles added to CUNY's job system in the past year are listed at the end of this Appendix. Not all titles were utilized by the College.

Further details on Job Groups and Labor Market Availability are provided in the Narrative.

Full Time Employee Count (excluding Chief Executive): 1,216

Category: Executive/Administrative/Managerial**Group: Administration 1 (Executive)**

Employees: 33

Description

Executive Compensation Plan (Other Than Chief Executive)

Executive Compensation Plan; Chief Executives (Presidents, Deans of Major Schools) are excluded

Labor Market Availability Factors**LMA Factor Weight Explanation**

LMA Factor	Weight	Explanation
1-External	50.00%	ACS 2013-2017 Nationwide workforce with Bachelors Degree or Higher and age of 29 or above (proxy for eight years' of post-Bachelor's experience) and in selected occupations: 0010 (Chief Executives), 0020 (General and Operations Managers), 0060 (Public Relations and Fundraising Managers), 0100 (Administrative Services Managers), 0110 (Computer and Information Systems Managers), 0120 (Financial Managers), 0136 (Human Resources Managers), and 0230 (Education Administrators).
1-Ext Italian-Amer.		ACS 2013-2017 Nationwide workforce with Bachelors Degree or Higher and age of 29 or above (proxy for eight years' of post-Bachelor's experience) and in selected occupations: 0010 (Chief Executives), 0020 (General and Operations Managers), 0060 (Public Relations and Fundraising Managers), 0100 (Administrative Services Managers), 0110 (Computer and Information Systems Managers), 0120 (Financial Managers), 0136 (Human Resources Managers), and 0230 (Education Administrators). Italian American = 100% of First Ancestry and 50% of Second Ancestry for 051 (Italian) and 068 (Sicilian).
2-Internal (all groups)	50.00%	Employees in the following titles: HE Officer, Professor, Associate Professor, IT Computer Systems Manager (Levels 5 and higher), or Chief Administrative Superintendent (Levels 4 and higher) as of 6/1/2018.

Title(s)	Employees
Administrator	1
Assc Administrator	1
Assc Dean	5
Asst Administrator	5
Asst Dean	1
Asst Vice President	10
Dean	2
Sr Vice President	1
Vice President	7

Category: Executive/Administrative/Managerial

Group: Administration 2 (Manager)

Employees: 152

Description

Manager-Level Administrators

Labor Market Availability Factors

LMA Factor	Weight	Explanation
1-External	50.00%	ACS 2013-2017 NY/NJ MSA workforce with Bachelors Degree or Higher and age of 25 or above (proxy for four years' post-Bachelor's experience) and in selected occupations: 0020 (General and Operations Managers), 0060 (Public Relations and Fundraising Managers), 0200 (Administrative Services Managers), 0110 (Computer and Information Systems Managers), 0120 (Financial Managers), 0136 (Human Resources Managers), 0230 (Education Administrators), 0710 (Management Analysts), 2000 (Counselors), and 2100 (Lawyers).
1-Ext Italian-Amer.		ACS 2013-2017 NY/NJ MSA workforce with Bachelors Degree or Higher and age of 25 or above (proxy for four years' post-Bachelor's experience) and in selected occupations: 0020 (General and Operations Managers), 0060 (Public Relations and Fundraising Managers), 0200 (Administrative Services Managers), 0110 (Computer and Information Systems Managers), 0120 (Financial Managers), 0136 (Human Resources Managers), 0230 (Education Administrators), 0710 (Management Analysts), 2000 (Counselors), and 2100 (Lawyers). Italian American = 100% of First Ancestry and 50% of Second Ancestry for 051 (Italian) and 068 (Sicilian).
2-Internal (all groups)	50.00%	Employees in HE Assistant title as of 6/1/2018.

Title(s)	Employees
HE Associate	89
HE Officer	63

Baruch College

Category: Executive/Administrative/Managerial**Group: Facility Manager**

Employees: 1

Description

Facility Superintendents (Managerial)

In 2017, Admin Superintendent and Chief Admin Superintendent groups were combined.

Labor Market Availability Factors**LMA Factor Weight Explanation**

1-External	55.00%	2013-2017 ACS, NY/NJ MSA, Bachelor's Degree or higher plus four years of Post-Bachelor's experience (proxy minimum age of 25) and in the following occupations: 0410 (Real Estate and Property Managers), 1300 (Architects), 1360 (Civil Engineers), and 8620 (Stationary Engineerings and Boiler Operators).
1-Ext Italian-Amer.		2013-2017 ACS, NY/NJ MSA, Bachelor's Degree or higher plus four years of Post-Bachelor's experience (proxy minimum age of 25) and in the following occupations: 0410 (Real Estate and Property Managers), 1300 (Architects), 1360 (Civil Engineers), and 8620 (Stationary Engineerings and Boiler Operators). Italian American = 100% of First Ancestry and 50% of Second Ancestry for 051 (Italian) and 068 (Sicilian).
2-Internal (all groups)	45.00%	Employees in the titles of Sr Stationary Engineer, Project Manager, Principal Park Supervisor, Principal Custodial Supervisor, or Supervisor of Laborers and Maintenance Workers, Civil Service permanency not required, as of 6/1/2018.

Title(s)	Employees
Chief Admin Supt - Competitive	1

Baruch College

Category: Executive/Administrative/Managerial

Group: IT Computer Manager

Employees: 3

Description

Information Technology Managers (Managerial)

Labor Market Availability Factors**LMA Factor Weight Explanation**

1-External	60.00%	2013-2017 ACS, NY/NJ MSA workforce, no degree requirement; six years' work experience (proxy minimum age of 23) and in the following occupation: 0110 (Computer and Information Systems Managers)
1-Ext Italian-Amer.		2013-2017 ACS, NY/NJ MSA workforce, no degree requirement; six years' work experience (proxy minimum age of 23) and in the following occupation: 0110 (Computer and Information Systems Managers). Italian American = 100% of First Ancestry and 50% of Second Ancestry for 051 (Italian) and 068 (Sicilian).
2-Internal (all groups)	40.00%	Employees in the title IT Senior Associate, Civil Service permanency not required, as of 6/1/2018.

Title(s)	Employees
IT Computer Systems Mgr	3

Baruch College

Category: Executive/Administrative/Managerial**Group:** Security Manager

Employees: 3

Description

Campus Security Managers (Managerial)

Labor Market Availability Factors**LMA Factor Weight Explanation**

1-External	55.00%	2013-2017 ACS, NY/NJ MSA workforce, High School Diploma or higher with seven years' experience (proxy minimum age of 24) in the following occupations: 0425 (Emergency Management Directors) and 3710 (First-Line Supervisors of Police and Detectives).
1-Ext Italian-Amer.		2013-2017 ACS, NY/NJ MSA workforce, High School Diploma or higher with seven years' experience (proxy minimum age of 24) in the following occupations: 0425 (Emergency Management Directors) and 3710 (First-Line Supervisors of Police and Detectives). Italian American = 100% of First Ancestry and 50% of Second Ancestry for 051 (Italian) and 068 (Sicilian).
2-Internal (all groups)	45.00%	Employees with Civil Service permanency in the titles Campus Public Safety Sergeant or Campus Security Specialist as of 6/1/2018.

Title(s)	Employees
Campus Security Asst Dir	2
Campus Security Dir	1

Category: Professional Faculty

Group: Faculty-Lecturer

Employees: 61

Description

Lecturer Faculty excluding Librarians. Lecturers are eligible for a certificate of continuous employment but not tenure. The minimum qualification for Lecturer is a Bachelor's degree in a discipline related to the subject being taught.

For utilization analysis in the Federal Plan, reviewed by academic discipline or program within job group.

Labor Market Availability Factors**LMA Factor Weight Explanation**

1-External	100.00%	2016 NCES Degree Completions, Bachelor's or Masters, NY and NJ, for selected disciplines (first and second majors), not weighted.
1-Ext Italian-Amer.		2013-2017 ACS, NY/NJ MSA workforce with Bachelor's Degree or Master's Degree.
2-Internal (all groups)	0.00%	NA

Title(s)	Employees
Clinical Professor	1
Dist Lecturer	10
Lecturer	33
Lecturer Doct Sch	16
Visiting Lecturer Doct Sch	1

Category: Professional Faculty

Group: Faculty-Librarian

Employees: 22

Description

CUNY Librarians with faculty appointments

Prior to 2019, a sub-group of professorial faculty; separated as it encompasses faculty of all ranks.

Labor Market Availability Factors**LMA Factor Weight Explanation**

1-External	100.00%	2016 NCAS Degree Completions, Master's level only, Nationwide, for Library Science Discipline.
1-Ext Italian-Amer.		2013-2017 ACS, Nationwide workforce with Master's Degree in the occupation Librarian (2430).
2-Internal (all groups)	0.00%	NA

Title(s)	Employees
Assc Professor	14
Asst Professor	3
Dist Lecturer	1
Professor	4

Group: Faculty-Professorial

Employees: 424

Description

Tenure-eligible faculty (excluding Librarians) for whom a terminal degree such as a Doctorate is a minimum qualification.

For utilization analysis in the Federal Plan, reviewed by academic discipline or program within job group.

Labor Market Availability Factors**LMA Factor Weight Explanation**

1-External	100.00%	2016 NCES Degree Completions, Doctoral, Nationwide for selected disciplines (first and second majors), not weighted.
1-Ext Italian-Amer.		2013-2017 ACS, Nationwide workforce, with Doctoral Degree, in the occupation 2200 (Post-Secondary Teachers)
2-Internal (all groups)	100.00%	NA

Title(s)	Employees
-----------------	------------------

Baruch College

Category: Professional Faculty

Asst Professor	129
Asst Professor	124
Dist Professor	6
Professor	164
Visiting Professor	1

Baruch College

Category: Professional Non-Faculty

Group: Accountant

Employees: 5

Description

Accountants (Professionals)

Labor Market Availability Factors**LMA Factor Weight Explanation**

1-External 0.00% Internal Only - Promotional Title

1-Ext Italian-
Amer. Internal Only

2-Internal 100.00% Employees with Civil Service permanency in the following titles: Accounting Assistant, Purchasing Agent Assistant or EOC Accounting Assistant; as of 6/1/2018.

Title(s)	Employees
Finance Accountant	2
Purchasing Agent	3

Category: Professional Non-Faculty

Group: Administration 3 (Professional)

Employees: 207

Description

Entry and Mid-Level Administrators (Professionals)

Labor Market Availability Factors

LMA Factor	Weight	Explanation
1-External	70.00%	ACS 2013-2017 NY/NJ MSA workforce with Bachelor's Degree or Higher and in the following occupations: 0630 (Human Resources Workers), 0740 (Business Operations Specialists), 0820 (Budget Analysts), 2000 (Counselors), 2550 (Education/Training/Library Workers), 2825 (Public Relations Specialists), 5000 (Supervisors of Office and Admin Support Workers), and 5250 (Customer Service Representatives).
1-Ext Italian-Amer.		ACS 2013-2017 NY/NJ MSA workforce with Bachelor's Degree or Higher and in the following occupations: 0630 (Human Resources Workers), 0740 (Business Operations Specialists), 0820 (Budget Analysts), 2000 (Counselors), 2550 (Education/Training/Library Workers), 2825 (Public Relations Specialists), 5000 (Supervisors of Office and Admin Support Workers), and 5250 (Customer Service Representatives). Italian American = 100% of First Ancestry and 50% of Second Ancestry for 051 (Italian) and 068 (Sicilian).
2-Internal (all groups)	15.00%	Employees who hold BA degrees and are in the following job groups: CUNY Office Assistant, CUNY Administrative Assistant, Accountant Technician or Accountant Professional as of 6/1/2018.

Title(s)	Employees
Asst to HEO	94
HE Assistant	112
Research Assc	1

Baruch College

Category: Professional Non-Faculty

Group: Administration 5 (Engineer-Architect)

Employees: 2

Description

Engineers, Architects and related professional staff

Labor Market Availability Factors

LMA Factor	Weight	Explanation
1-External	100.00%	2013-2017 ACS, NY/NJ MSA workforce, no degree requirement, in the following occupations: 0220 (Construction Managers), 0300 (Engineering Managers), 1300 (Architects, except Naval), 1360 (Civil Engineers), 1540 (Drafters), 1560 (Surveying and Mapping Technicians).
1-Ext Italian-Amer.		2013-2017 ACS, NY/NJ MSA workforce, no degree requirement, in the following occupations: 0220 (Construction Managers), 0300 (Engineering Managers), 1300 (Architects, except Naval), 1360 (Civil Engineers), 1540 (Drafters), 1560 (Surveying and Mapping Technicians). Italian American = 100% of First Ancestry and 50% of Second Ancestry for 051 (Italian) and 068 (Sicilian).
2-Internal (all groups)	0.00%	NA

Title(s)	Employees
Interior Designer	1
Project Mgr	1

Category: Professional Non-Faculty**Group: IT Computer Professional**

Employees: 26

Description

Information Technology Professionals

In 2017, split from IT Technicians and moved to Professionals' group

Labor Market Availability Factors**LMA Factor Weight Explanation**

1-External	75.00%	2013-2017 ACS, NY/NJ MSA, High School Diploma or higher plus four years of Post-High School experience (proxy minimum age of 21) in the following occupations: 0740 (Business Operations Specialists), 1006 (Computer Systems Analysts), 1010 (Computer Programmers), 1020 (Software Developers, Applications and Systems Software), 1030 (Web Developers), 1060 (Database Administrators), and 1105 (Network and Computer Systems Administrators).
1-Ext Italian-Amer.		2013-2017 ACS, NY/NJ MSA, High School Diploma or Higher plus four years of Post-High School experience (proxy minimum age of 21) in the following occupations: 0740 (Business Operations Specialists), 1006 (Computer Systems Analysts), 1010 (Computer Programmers), 1020 (Software Developers, Applications and Systems Software), 1030 (Web Developers), 1060 (Database Administrators), and 1105 (Network and Computer Systems Administrators). Italian American = 100% of First Ancestry and 50% of Second Ancestry for 051 (Italian) and 068 (Sicilian).
2-Internal (all groups)	25.00%	Employees in the IT Support Assistant and CUNY Office Assistant titles, Civil Service permanency not required, as of 6/1/2018

Title(s)	Employees
IT Associate	8
IT Asst	10
IT Bus Data Rep Analyst	1
IT Sr Associate	7

Category: Administrative Support Workers

Group: Accountant Assistant

Employees: 6

Description

Accounting Support Staff (Accounting and Purchasing Agent Assistants and Payroll Staff)

Labor Market Availability Factors

LMA Factor	Weight	Explanation
1-External	70.00%	ACS 2013-2017 NY/NJ MSA workforce with High School Diploma or Higher in the following occupations: 5140 (Payroll and Timekeeping Clerks), 5150 (Procurement Clerks), or 5120 (Bookkeeping, Accounting, and Auditing Clerks).
1-Ext Italian-Amer.		ACS 2013-2017 NY/NJ MSA workforce with High School Diploma or Higher in the following occupations: 5140 (Payroll and Timekeeping Clerks), 5150 (Procurement Clerks), or 5120 (Bookkeeping, Accounting, and Auditing Clerks). Italian American = 100% of First Ancestry and 50% of Second Ancestry for 051 (Italian) and 068 (Sicilian).
2-Internal (all groups)	30.00%	Employees in titles CUNY Office Assistant or EOC Office Assistant, Civil Service permanency not required; as of 6/1/2018.

Title(s)	Employees
Finance Accountant Asst	6

Group: Administrative Assistant

Employees: 20

Description

Administrative Support Staff-Senior Level

Labor Market Availability Factors

LMA Factor	Weight	Explanation
1-External	0.00%	Internal Only - Promotional Title
1-Ext Italian-Amer.		Internal Only
2-Internal (all groups)	100.00%	Population of employees on the active CUNY Administrative Assistant Civil Service list #2055 (413 CUNY employees). CUNY Office Assistant Levels 3 or 4 with Civil Service permanency were eligible to take this examination.

Title(s)	Employees
----------	-----------

Category: Administrative Support Workers

CUNY Admin Asst

20

Group: Mail Services Worker

Employees: 3

Description

Mail Services Workers

Labor Market Availability Factors

LMA Factor	Weight	Explanation
------------	--------	-------------

1-External	100.00%	2013-2017 ACS, NY/NJ MSA workforce, no degree requirement, in the following occupation: 5850 (Mail Clerks/Mail Machine Operators, Except Postal Service).
1-Ext Italian-Amer.		2013-2017 ACS, NY/NJ MSA workforce, no degree requirement, in occupation 5850 (Mail Clerks/Mail Machine Operators, Except Postal Service). Italian American = 100% of First Ancestry and 50% of Second Ancestry for 051 (Italian) and 068 (Sicilian).
2-Internal (all groups)	0.00%	NA

Title(s)	Employees
----------	-----------

Mail Message Svcs Worker	3
--------------------------	---

Baruch College

Category: Administrative Support Workers

Group: Office Assistant

Employees: 44

Description

Administrative Support Staff-Entry Level

Labor Market Availability Factors**LMA Factor Weight Explanation**

1-External	100.00%	2013-2017 ACS, NY/NJ MSA workforce, individuals with a High School Diploma or higher and in the following occupations: 5700 (Secretaries and Administrative Assistants), 5820 (Word Processors and Typists), 5860 (Office Clerks, General), and 5940 (Office Administrative Support Workers, all other).
1-Ext Italian-Amer.		2013-2017 ACS, NY/NJ MSA workforce, individuals with a High School Diploma or higher and in the following occupations: 5700 (Secretaries and Administrative Assistants), 5820 (Word Processors and Typists), 5860 (Office Clerks, General), and 5940 (Office Administrative Support Workers, all other). Italian American = 100% of First Ancestry and 50% of Second Ancestry for 051 (Italian) and 068 (Sicilian).
2-Internal (all groups)	0.00%	NA

Title(s)	Employees
CUNY Office Assistant	44

Category: Technicians**Group: Administration 4 (College Lab Tech)**

Employees: 7

Description

College Laboratory Technicians (abbreviated as "CLT")

For utilization analyses reviewed by sub-group: Science/Technical/Engineering; Other Lab Techs.

Labor Market Availability Factors**LMA Factor Weight Explanation**

1-External 100.00% 2013-2017 ACS, NY/NJ MSA workforce with High School Diploma or Higher. For the Scientific/Technical/IT specialty, in the following occupations: 1050 (Computer Support Specialists), 1965 (Other Life Physical and Social Science Technicians), 1910 (Biological Technicians), 1920 (Chemical Technicians), 1550 (Engineering Technicians), 2860 (Miscellaneous Media and Communications Workers). For the "Other" Specialty, 1050 (Computer Support Specialists), 1950 (Social Science Research Assistants), 2440 (Library Technicians), and 2860 (Miscellaneous Media and Communications Workers).

1-Ext Italian-Amer. 2013-2017 ACS, NY/NJ MSA workforce with High School Diploma or Higher. For the Scientific/Technical/IT specialty, in the following occupations: 1050 (Computer Support Specialists), 1965 (Other Life Physical and Social Science Technicians), 1910 (Biological Technicians), 1920 (Chemical Technicians), 1550 (Engineering Technicians), 2860 (Miscellaneous Media and Communications Workers). For the "Other" Specialty, 1050 (Computer Support Specialists), 1950 (Social Science Research Assistants), 2440 (Library Technicians), and 2860 (Miscellaneous Media and Communications Workers). Italian American = 100% of First Ancestry and 50% of Second Ancestry for 051 (Italian) and 068 (Sicilian).

2-Internal 0.00% NA
(all groups)

Title(s)	Employees
College Lab Tech	3
Sr College Lab Tech	4

Category: Technicians

Group: Broadcast/Media

Employees: 3

Description

Broadcast and Mass Media Technicians and Graphic Designers

In 2019, number of titles and scope were expanded

Labor Market Availability Factors

LMA Factor	Weight	Explanation
1-External	100.00%	2013-2017 ACS, NY/NJ MSA workforce, High School Diploma or higher in the following occupations: 2900 (Broadcast and Sound Engineering Technicians and Radio Operators and Other Workers), 2920 (Television, Video, and Motion Picture Camera Operators and Editors), 2710 (Producers and Directors).
1-Ext Italian-Amer.		2013-2017 ACS, NY/NJ MSA workforce, High School Diploma or higher in the following occupations: 2900 (Broadcast and Sound Engineering Technicians and Radio Operators and Other Workers), 2920 (Television, Video, and Motion Picture Camera Operators and Editors), 2710 (Producers and Directors). Italian American = 100% of First Ancestry and 50% of Second Ancestry for 051 (Italian) and 068 (Sicilian).
2-Internal (all groups)	0.00%	NA

Title(s)	Employees
Media Svcs Tech	3

Category: Technicians

Group: IT Support Technician

Employees: 1

Description

IT Technical Support Workers

In 2017, IT Technicians were split from the Professional IT Staff

Labor Market Availability Factors**LMA Factor Weight Explanation**

1-External	100.00%	2013-2017 ACS, NY/NJ MSA workforce, High School Diploma or higher in the following occupation: 1050 (Computer Support Specialists).
1-Ext Italian-Amer.		2013-2017 ACS, NY/NJ MSA workforce, High School Diploma or higher in the following occupation: 1050 (Computer Support Specialists). Italian American = 100% of First Ancestry and 50% of Second Ancestry for 051 (Italian) and 068 (Sicilian).
2-Internal (all groups)	0.00%	NA

Title(s)	Employees
IT Support Asst	1

Category: Craft Workers

Group: Basic Crafts-Buildings and Grounds

Employees: 10

Description

Buildings and Grounds Workers

In 2017, Maintenance Workers moved from Skilled Trades into this group. In 2019, Supervisor (Maintenance and Labor) moved from Skilled Trades into this group.

Labor Market Availability Factors

LMA Factor	Weight	Explanation
1-External	80.00%	2013-2017 ACS, NY/NJ MSA workforce, no degree requirement, in the following occupations: 4210 (First-Line Supervisors of Landscape/Lawn Service/Grounds Workers), 4250 (Grounds Maintenance Workers), 7200 (Automotive Service Technicians and Mechanics), 7340 (Maintenance and Repair Workers-General), 9140 (Tax Drivers and Chauffeurs), and 9120 (Bus Drivers).
1-Ext Italian-Amer.		2013-2017 ACS, NY/NJ MSA workforce, no degree requirement, in the following occupations: 4210 (First-Line Supervisors of Landscape/Lawn Service/Grounds Workers), 4250 (Grounds Maintenance Workers), 7200 (Automotive Service Technicians and Mechanics), 7340 (Maintenance and Repair Workers-General), 9140 (Tax Drivers and Chauffeurs), and 9120 (Bus Drivers). Italian American = 100% of First Ancestry and 50% of Second Ancestry for 051 (Italian) and 068 (Sicilian).
2-Internal (all groups)	20.00%	Employees in the Custodian and Custodial Supervisor job groups, and employees in Helper titles in the Laborers and Helpers job group, Civil Service permanency not required, as of 6/1/2018.

Title(s)	Employees
Maintenance Worker	9
Motor Vehicle Operator	1

Category: Craft Workers

Group: Laborers and Helpers

Employees: 2

Description

Entry-Level Craft Workers

In 2017, split from Skilled Trades

Labor Market Availability Factors

LMA Factor	Weight	Explanation
1-External	60.00%	2013-2017 ACS, NY/NJ MSA workforce, no degree requirement, in the following occupations: 6600 (Helpers-Electricians, Helpers-Pipelayers, etc.) and 9630 (Laborers and Freight, Stock and Material Movers).
1-Ext Italian-Amer.		2013-2017 ACS, NY/NJ MSA workforce, no degree requirement, in the following occupations: 6600 (Helpers-Electricians, Helpers-Pipelayers, etc.) and 9630 (Laborers and Freight, Stock and Material Movers). Italian American = 100% of First Ancestry and 50% of Second Ancestry for 051 (Italian) and 068 (Sicilian).
2-Internal (all groups)	40.00%	Employees in the Custodial Assistant and Maintenance Worker titles, Civil Service permanency not required, as of 6/1/2018.

Title(s)	Employees
Plumber Helper	1
Stock Worker	1

Baruch College

Category: Craft Workers**Group: Skilled Trades**

Employees: 18

Description

Skilled Tradespeople

Labor Market Availability Factors**LMA Factor Weight Explanation**

LMA Factor	Weight	Explanation
1-External	75.00%	2013-2017 ACS, NY/NJ MSA workforce, no degree requirement, in the following occupations: 6230 (Carpenters), 6250 (Cement Masons/Concrete Finishers), 6335 (Electricians), 6420 (Painters and Paper Hangers), 6440 (Pipelayers, Plumbers, Pipefitters, and Steamfitters), 6460 (Plasterers and Stucco Masons), 6515 (Roofers), 6700 (Elevator Installers and Repairers), 7300 (Control and Valve Installers and Repairers), 7350 (Machinery Maintenance Workers), 7540 (Locksmiths and Safe Repairers), 8030 (Machinists), and 8610 (Stationary Engineers and Boiler Operators).
1-Ext Italian-Amer.		2013-2017 ACS, NY/NJ MSA workforce, no degree requirement, in the following occupations: 6230 (Carpenters), 6250 (Cement Masons/Concrete Finishers), 6335 (Electricians), 6420 (Painters and Paper Hangers), 6440 (Pipelayers, Plumbers, Pipefitters, and Steamfitters), 6460 (Plasterers and Stucco Masons), 6515 (Roofers), 6700 (Elevator Installers and Repairers), 7300 (Control and Valve Installers and Repairers), 7350 (Machinery Maintenance Workers), 7540 (Locksmiths and Safe Repairers), 8030 (Machinists), 8610 (Stationary Engineers and Boiler Operators). Italian American = 100% of First Ancestry and 50% of Second Ancestry for 051 (Italian) and 068 (Sicilian).
2-Internal (all groups)	25.00%	Employees in the title of Maintenance Worker or in any of the Helper titles in the Laborer-Helper job group, Civil Service permanency not required, as of 6/1/2018.

Title(s)	Employees
Carpenter	4
Electrician	2
High Pressure Plant Tender	1
Locksmith	1
Oiler	1
Painter	3
Plumber	1
Stationary Engineer	4
Thermostat Repairer	1

Baruch College

Category: Craft Workers

Group: Skilled Trades-Supervisor

Employees: 3

Description

Skilled Trades Supervisors

Labor Market Availability Factors

LMA Factor	Weight	Explanation
1-External	0.00%	Internal Only-Promotional Title
1-Ext Italian-Amer.		Internal Only
2-Internal (all groups)	100.00%	Employees with Civil Service permanency in Skilled Trade job group titles corresponding to the supervisory titles as of 6/1/2018.

Title(s)	Employees
Carpenter Supervisor	1
Painter Supervisor	1
Stationary Engineer Sr	1

Baruch College

Category: Service Workers and Others**Group:** Campus Peace Officer

Employees: 36

Description

Campus Security-Mid Level Staff

Prior to 2019, security staff titles were divided into CPO1 (CSA and CPO Level 1) and CPO2 (CPO Level 2)

Labor Market Availability Factors**LMA Factor Weight Explanation**

1-External	0.00%	2013-2017 ACS, New York State residents within the NY/NJ MSA workforce, with one year or more of College and in the occupation of 3850 (Police and Sheriffs Patrol Officers).
1-Ext Italian-Amer.		2013-2017 ACS, New York State residents within the NY/NJ MSA workforce with one year or more of College and in the occupation of 3850 (Police and Sheriffs Patrol Officers). Italian American = 100% of First Ancestry and 50% of Second Ancestry for 051 (Italian) and 068 (Sicilian).
2-Internal (all groups)	20.00%	Employees in the title of Campus Security Assistant, Civil Service permanency not required, as of 6/1/2018.

Title(s)	Employees
Campus Peace Officer	36

Category: Service Workers and Others

Group: Campus Public Safety Sergeant

Employees: 11

Description

Campus Security Supervisors and Campus Security Specialists

Labor Market Availability Factors

LMA Factor	Weight	Explanation
1-External	0.00%	For Campus Public Safety Sergeant, Internal only (promotional title). For Campus Security Specialist, candidates on a Civil Service list as of 6/1/2018; however not calculated as demographic data was not available and a small number were hired externally.
1-Ext Italian-Amer.		For Campus Public Safety Sergeant, Internal only (promotional title). For Campus Security Specialist, candidates on a Civil Service list as of 6/1/2018; however not calculated as demographic data was not available and a small number were hired externally.
2-Internal (all groups)	100.00%	For Campus Public Safety Sergeant, employees in the title of Campus Peace Officer with Civil Service permanency and two years of permanent service as of 6/1/2018.

Title(s)	Employees
Campus Pub Safety Sergeant	8
Campus Security Specialist	3

Baruch College

Category: Service Workers and Others**Group: Campus Security Assistant**

Employees: 29

Description

Campus Security-Entry Level Staff

Prior to 2019, security staff titles were divided into CPO1 (CSA and CPO Level 1) and CPO2 (CPO Level 2)

Labor Market Availability Factors**LMA Factor Weight Explanation**

1-External 100.00% 2013-2017 ACS, New York State residents within the NY/NJ MSA workforce with High School Diploma or higher and one year of work experience (using proxy of minimum age of 18) and in the occupation of 3930 (Security Guards and Gaming Surveillance Officers).

1-Ext Italian-Amer. 2013-2017 ACS, New York State residents within the NY/NJ MSA with High School Diploma or higher and one year of work experience (using proxy of minimum age of 18) and in the occupation of 3930 (Security Guards and Gaming Surveillance Officers). Italian American = 100% of First Ancestry and 50% of Second Ancestry for 051 (Italian) and 068 (Sicilian).

2-Internal 0.00% NA
(all groups)

Title(s) Employees

Campus Security Asst

29

Baruch College

Category: Service Workers and Others**Group: Custodial**

Employees: 72

Description

Custodians-Entry Level

Labor Market Availability Factors

LMA Factor	Weight	Explanation
1-External	100.00%	2013-2017 ACS, NY/NJ MSA workforce, no degree requirement, in the occupation 4220 (Janitors and Building Cleaners).
1-Ext Italian-Amer.		2013-2017 ACS, NY/NJ MSA workforce, no degree requirement, in the following occupation: 4220 (Janitors and Building Cleaners). Italian American = 100% of First Ancestry and 50% of Second Ancestry for 051 (Italian) and 068 (Sicilian).
2-Internal (all groups)	0.00%	NA

Title(s)	Employees
Custodial Assistant	72

Group: Custodial Supervisor

Employees: 12

Description

Custodial Supervisors

Labor Market Availability Factors

LMA Factor	Weight	Explanation
1-External	45.00%	2013-2017 ACS, NY/NJ MSA workforce, 8th Grade education or higher and in the occupation 4200 (First-Line Supervisors/Managers of Housekeeping and Janitorial Workers).
1-Ext Italian-Amer.		2013-2017 ACS, NY/NJ MSA workforce, 8th Grade education or higher and in the occupation 4200 (First-Line Supervisors/Managers of Housekeeping and Janitorial Workers). Italian American = 100% of First Ancestry and 50% of Second Ancestry for 051 (Italian) and 068 (Sicilian).
2-Internal (all groups)	55.00%	Employees in the Custodial job group who are not temporary as of 6/1/2018.

Title(s)	Employees
Custodial Asst Principal Supv	1
Custodial Principal Supv	1

Category: Service Workers and Others

Custodial Sr Supervisor	3
Custodial Supervisor	7

Baruch College

In the 2019-2020 Academic Year, CUNY added the titles listed below (not all are used at the College)

Job Code and Title Name	Job Group
200587 Univ Vice Chancellor Compliance and Audit	ADMIN1-EXEC
200588 Univ Associate Vice Chancellor Communications and Marketing	ADMIN1-EXEC
200589 Univ Exec Deputy Director Engineering	ADMIN1-EXEC
200590 Assistant Dean Continuing Education	ADMIN1-EXEC
200592 Univ Assistant Vice Chancellor	ADMIN1-EXEC
200594 Univ Exec Director Advancement	ADMIN1-EXEC
200595 University Executive Director Investigations	ADMIN1-EXEC
200597 Prof School Executive Director Info Technology (PAstAdm)	ADMIN1-EXEC
200598 Univ Sr Vice Chancellor Labor Relations	ADMIN1-EXEC
200599 Univ Sr Advisor to the Executive Vice Chancellor	ADMIN1-EXEC
200601 Prof School Assistant Dean of Academic Affairs	ADMIN1-EXEC
200603 Exec Director Master's Program in Public Adm (AstAdm)	ADMIN1-EXEC

Baruch College

Appendix D-1 lists categories assigned to College Laboratory Technicians (Administration 4 Group) based on the academic department to which they are assigned (either "Science Technology and Engineering" or "All Other").

Groups of less than five employees total are listed below but will not be included in the utilization analyses in Appendix E.

Full-Time Employee Count: 7

Discipline: College Lab Tech-Blended Science Engineering Technical

Employees: 5

Department ID	Department Name	Technicians
10208	Natural Sciences	5

Discipline: College Lab Tech-Other

Employees: 2

Department ID	Department Name	Technicians
10172	Journalism & Writing Profess	1
10204	Modern Languages & Comp Lit	1

Baruch College

Appendix E-1 presents utilization and underutilization of protected groups by job group. A group is displayed only when five or more employees assigned to it.

Underutilization occurs where the utilization of a protected group is less than 80% of Labor Market Availability. We calculate a number approximating the number of full-time employees that would be needed to make utilization equal to the labor market. Where utilization is zero (0), underutilization exists but not to the level of one full-time equivalent employee. Blanks indicate no underutilization.

Underutilization numbers represent specific placement goals as prescribed for federal Affirmative Action Plans.

Total Minority is comprised of Asian/Hawaiian/Other Pacific Islander, Black/African American, Hispanic/Latino, American Indian/Alaska Native and Two or More Races.

APPENDIX E-1 - ADMINISTRATOR / STAFF UTILIZATION BY JOB GROUP (ITALIAN AMERICAN PLAN) 2020-2021

Baruch College

Category: Executive/Administrative/Managerial

Job Group: Administration 1 (Executive)

Description: Executive Compensation Plan (Other Than Chief Executive)

Full-Time Employees: 33

Employees in this group hold the following titles:

Title ID	Title Name
04315	Administrator
04321	Assc Administrator
04320	Assc Dean
04723	Asst Administrator
04722	Asst Dean
04316	Asst Vice President
04314	Dean
04701	Sr Vice President
04702	Vice President

	Utilization Report					
	Female	Total Minority	Asian/Nat. Haw./Other Pac. Isl.	Black/African Am.	Hispanic/ Latino	Italian American
Number of Employees	18	11	3	5	3	3
Underutilized (Y = Yes)						
Number Underutilized						
Actual Utilization Percent	54.5%	33.3%	9.1%	15.2%	9.1%	9.1%
Labor Market Avail. Percent	44.2%	27.7%	9.8%	8.8%	7.9%	7.2%

APPENDIX E-1 - ADMINISTRATOR / STAFF UTILIZATION BY JOB GROUP (ITALIAN AMERICAN PLAN) 2020-2021

Baruch College

Category: Executive/Administrative/Managerial

Job Group: Administration 2 (Manager)

Description: Manager-Level Administrators

Full-Time Employees: 152

Employees in this group hold the following titles:

Title ID	Title Name
04075	HE Associate
04097	HE Officer

Utilization Report						
	Female	Total Minority	Asian/Nat. Haw./Other Pac. Isl.	Black/African Am.	Hispanic/ Latino	Italian American
Number of Employees	108	67	19	25	23	11
Underutilized (Y = Yes)						Y
Number Underutilized						4
Actual Utilization Percent	71.1%	44.1%	12.5%	16.4%	15.1%	7.2%
Labor Market Avail. Percent	57.4%	48.1%	11.0%	19.6%	15.7%	10.0%

APPENDIX E-1 - ADMINISTRATOR / STAFF UTILIZATION BY JOB GROUP (ITALIAN AMERICAN PLAN) 2020-2021

Baruch College

Category: Professional Non-Faculty

Job Group: Accountant

Description: Accountants (Professionals)

Full-Time Employees: 5

Employees in this group hold the following titles:

Title ID	Title Name
04801	Finance Accountant
12121	Purchasing Agent

Utilization Report

	Female	Total Minority	Asian/Nat. Haw./Other Pac. Isl.	Black/African Am.	Hispanic/ Latino	Italian American
Number of Employees	5	4	3	0	1	0
Underutilized (Y = Yes)				Y		Y
Number Underutilized				2		0
Actual Utilization Percent	100.0%	80.0%	60.0%	0.0%	20.0%	0.0%
Labor Market Avail. Percent	83.6%	72.6%	20.5%	34.2%	17.8%	4.1%

APPENDIX E-1 - ADMINISTRATOR / STAFF UTILIZATION BY JOB GROUP (ITALIAN AMERICAN PLAN) 2020-2021

Baruch College

Category: Professional Non-Faculty

Job Group: Administration 3 (Professional)

Description: Entry and Mid-Level Administrators (Professionals)

Full-Time Employees: 207

Employees in this group hold the following titles:

Title ID	Title Name
04017	Asst to HEO
04099	HE Assistant
04134	Research Assc

Utilization Report						
	Female	Total Minority	Asian/Nat. Haw./Other Pac. Isl.	Black/African Am.	Hispanic/ Latino	Italian American
Number of Employees	152	144	39	52	52	4
Underutilized (Y = Yes)						Y
Number Underutilized						22
Actual Utilization Percent	73.4%	69.6%	18.8%	25.1%	25.1%	1.9%
Labor Market Avail. Percent	69.0%	43.4%	12.3%	16.7%	12.5%	12.8%

APPENDIX E-1 - ADMINISTRATOR / STAFF UTILIZATION BY JOB GROUP (ITALIAN AMERICAN PLAN) 2020-2021

Baruch College

Category: Professional Non-Faculty

Job Group: IT Computer Professional

Description: Information Technology Professionals

Full-Time Employees: 26

Employees in this group hold the following titles:

Title ID	Title Name
04877	IT Associate
04875	IT Asst
04029	IT Bus Data Rep Analyst
04880	IT Sr Associate

Utilization Report						
	Female	Total Minority	Asian/Nat. Haw./Other Pac. Isl.	Black/African Am.	Hispanic/ Latino	Italian American
Number of Employees	7	23	10	5	8	0
Underutilized (Y = Yes)	Y					Y
Number Underutilized	4					2
Actual Utilization Percent	26.9%	88.5%	38.5%	19.2%	30.8%	0.0%
Labor Market Avail. Percent	42.3%	55.7%	28.0%	13.3%	12.7%	8.2%

APPENDIX E-1 - ADMINISTRATOR / STAFF UTILIZATION BY JOB GROUP (ITALIAN AMERICAN PLAN) 2020-2021

Baruch College

Category: Administrative Support Workers

Job Group: Accountant Assistant

Description: Accounting Support Staff (Accounting and Purchasing Agent Assistants a

Full-Time Employees: 6

Employees in this group hold the following titles:

Title ID	Title Name
04800	Finance Accountant Asst

Utilization Report						
	Female	Total Minority	Asian/Nat. Haw./Other Pac. Isl.	Black/African Am.	Hispanic/ Latino	Italian American
Number of Employees	5	5	1	2	2	0
Underutilized (Y = Yes)						Y
Number Underutilized						1
Actual Utilization Percent	83.3%	83.3%	16.7%	33.3%	33.3%	0.0%
Labor Market Avail. Percent	83.1%	49.2%	10.8%	19.3%	17.3%	14.0%

APPENDIX E-1 - ADMINISTRATOR / STAFF UTILIZATION BY JOB GROUP (ITALIAN AMERICAN PLAN) 2020-2021

Baruch College

Category: Administrative Support Workers

Job Group: Administrative Assistant

Description: Administrative Support Staff-Senior Level

Full-Time Employees: 20

Employees in this group hold the following titles:

Title ID	Title Name
04804	CUNY Admin Asst

Utilization Report						
	Female	Total Minority	Asian/Nat. Haw./Other Pac. Isl.	Black/African Am.	Hispanic/ Latino	Italian American
Number of Employees	16	14	3	7	4	0
Underutilized (Y = Yes)						Y
Number Underutilized						1
Actual Utilization Percent	80.0%	70.0%	15.0%	35.0%	20.0%	0.0%
Labor Market Avail. Percent	90.3%	68.0%	7.5%	36.3%	24.0%	6.5%

APPENDIX E-1 - ADMINISTRATOR / STAFF UTILIZATION BY JOB GROUP (ITALIAN AMERICAN PLAN) 2020-2021

Baruch College

Category: Administrative Support Workers

Job Group: Office Assistant

Description: Administrative Support Staff-Entry Level

Full-Time Employees: 44

Employees in this group hold the following titles:

Title ID	Title Name
04802	CUNY Office Assistant

Utilization Report						
	Female	Total Minority	Asian/Nat. Haw./Other Pac. Isl.	Black/African Am.	Hispanic/ Latino	Italian American
Number of Employees	40	32	3	18	11	3
Underutilized (Y = Yes)						Y
Number Underutilized						5
Actual Utilization Percent	90.9%	72.7%	6.8%	40.9%	25.0%	6.8%
Labor Market Avail. Percent	87.9%	40.0%	7.8%	14.3%	16.2%	17.4%

APPENDIX E-1 - ADMINISTRATOR / STAFF UTILIZATION BY JOB GROUP (ITALIAN AMERICAN PLAN) 2020-2021

Baruch College

Category: Craft Workers

Job Group: Basic Crafts-Buildings and Grounds

Description: Buildings and Grounds Workers

Full-Time Employees: 10

Employees in this group hold the following titles:

Title ID	Title Name
90698	Maintenance Worker
91212	Motor Vehicle Operator

Utilization Report						
	Female	Total Minority	Asian/Nat. Haw./Other Pac. Isl.	Black/African Am.	Hispanic/ Latino	Italian American
Number of Employees	0	6	0	2	4	1
Underutilized (Y = Yes)	Y		Y			
Number Underutilized	2		1			
Actual Utilization Percent	0.0%	60.0%	0.0%	20.0%	40.0%	10.0%
Labor Market Avail. Percent	16.1%	67.7%	11.7%	22.8%	31.3%	7.8%

Baruch College

Category: Craft Workers

Job Group: Skilled Trades

Description: Skilled Tradespeople

Full-Time Employees: 18

Employees in this group hold the following titles:

Title ID	Title Name
04899	Carpenter
91717	Electrician
91650	High Pressure Plant Tender
04905	Locksmith
04891	Oiler
91830	Painter
91915	Plumber
04915	Stationary Engineer
91940	Thermostat Repairer

	Utilization Report					
	Female	Total Minority	Asian/Nat. Haw./Other Pac. Isl.	Black/African Am.	Hispanic/ Latino	Italian American
Number of Employees	0	3	1	0	2	1
Underutilized (Y = Yes)	Y	Y		Y	Y	Y
Number Underutilized	0	5		2	3	2
Actual Utilization Percent	0.0%	16.7%	5.6%	0.0%	11.1%	5.6%
Labor Market Avail. Percent	2.2%	45.1%	4.3%	13.1%	25.6%	13.9%

APPENDIX E-1 - ADMINISTRATOR / STAFF UTILIZATION BY JOB GROUP (ITALIAN AMERICAN PLAN) 2020-2021

Baruch College

Category: Service Workers and Others

Job Group: Campus Public Safety Sergeant

Description: Campus Security Supervisors and Campus Security Specialists

Full-Time Employees: 11

Employees in this group hold the following titles:

Title ID	Title Name
04846	Campus Pub Safety Sergeant
04845	Campus Security Specialist

Utilization Report						
	Female	Total Minority	Asian/Nat. Haw./Other Pac. Isl.	Black/African Am.	Hispanic/ Latino	Italian American
Number of Employees	2	10	0	7	3	0
Underutilized (Y = Yes)			Y			Y
Number Underutilized			1			0
Actual Utilization Percent	18.2%	90.9%	0.0%	63.6%	27.3%	0.0%
Labor Market Avail. Percent	21.9%	88.1%	4.9%	53.8%	27.4%	0.3%

Baruch College

Category: Service Workers and Others

Job Group: Campus Peace Officer
 Description: Campus Security-Mid Level Staff
 Full-Time Employees: 36

Employees in this group hold the following titles:

Title ID	Title Name
04844	Campus Peace Officer

Utilization Report						
	Female	Total Minority	Asian/Nat. Haw./Other Pac. Isl.	Black/African Am.	Hispanic/ Latino	Italian American
Number of Employees	11	36	1	25	10	0
Underutilized (Y = Yes)			Y			Y
Number Underutilized			2			6
Actual Utilization Percent	30.6%	100.0%	2.8%	69.4%	27.8%	0.0%
Labor Market Avail. Percent	18.6%	53.8%	7.7%	24.1%	20.2%	15.9%

Baruch College

Category: Service Workers and Others

Job Group: Campus Security Assistant

Description: Campus Security-Entry Level Staff

Full-Time Employees: 29

Employees in this group hold the following titles:

Title ID	Title Name
04841	Campus Security Asst

Utilization Report						
	Female	Total Minority	Asian/Nat. Haw./Other Pac. Isl.	Black/African Am.	Hispanic/ Latino	Italian American
Number of Employees	10	27	2	15	10	0
Underutilized (Y = Yes)						Y
Number Underutilized						2
Actual Utilization Percent	34.5%	93.1%	6.9%	51.7%	34.5%	0.0%
Labor Market Avail. Percent	19.8%	71.2%	6.9%	41.4%	20.4%	8.5%

Baruch College

Category: Service Workers and Others

Job Group: Custodial Supervisor

Description: Custodial Supervisors

Full-Time Employees: 12

Employees in this group hold the following titles:

Title ID	Title Name
80560	Custodial Asst Principal Supv
80561	Custodial Principal Supv
80535	Custodial Sr Supervisor
04862	Custodial Supervisor

Utilization Report						
	Female	Total Minority	Asian/Nat. Haw./Other Pac. Isl.	Black/African Am.	Hispanic/ Latino	Italian American
Number of Employees	2	11	0	5	6	0
Underutilized (Y = Yes)	Y		Y			Y
Number Underutilized	2		1			1
Actual Utilization Percent	16.7%	91.7%	0.0%	41.7%	50.0%	0.0%
Labor Market Avail. Percent	32.7%	74.5%	5.3%	30.5%	38.0%	5.8%

Baruch College

Category: Service Workers and Others

Job Group: Custodial

Description: Custodians-Entry Level

Full-Time Employees: 72

Employees in this group hold the following titles:

Title ID	Title Name
04861	Custodial Assistant

Utilization Report						
	Female	Total Minority	Asian/Nat. Haw./Other Pac. Isl.	Black/African Am.	Hispanic/ Latino	Italian American
Number of Employees	29	67	9	22	36	0
Underutilized (Y = Yes)						Y
Number Underutilized						5
Actual Utilization Percent	40.3%	93.1%	12.5%	30.6%	50.0%	0.0%
Labor Market Avail. Percent	26.9%	68.0%	5.1%	19.8%	41.5%	7.6%

Baruch College

Appendix E-2 presents utilization and underutilization for College Laboratory Technicians, by general discipline and by protected demographic group. A group is displayed only when five or more employees are assigned to it.

Underutilization occurs where utilization of a given group is less than 80% of Labor Market Availability. We calculate a number approximating the number of full-time employees that would be needed to make utilization equal to the labor market. When this number is zero (0), underutilization exists but not to the level of one full-time equivalent employee. Blanks represent no underutilization.

Underutilization numbers represent specific placement goals as prescribed for federal Affirmative Action Plans.

Total Minority is comprised of Asian/Hawaiian/Other Pacific Islander, Black/African American, Hispanic/Latino, American Indian/Alaska Native, and Two or More Races.

Baruch College

College Lab Tech - Science, Tech, Eng.

Full-Time Employees: 5

Employees in this category are work in the following department(s):

Department ID Department Name

10208 Natural Sciences

	Utilization Report					
	Female	Total Minority	Asian/Nat. Haw./Oth Pac. Isl.	Black/African Am.	Hispanic/ Latino	Italian American
Number of Employees	4	2	1	1	0	0
Underutilized (Y = Yes)					Y	Y
Number Underutilized					1	1
Actual Utilization Percent	80.0%	40.0%	20.0%	20.0%	0.0%	0.0%
Labor Market Avail. Percent	27.8%	49.3%	22.4%	10.6%	14.2%	11.5%

Baruch College

Appendix E-3 presents utilization and underutilization, of faculty members in protected groups by faculty job group. A group is displayed only when five or more faculty are assigned to it.

Underutilization occurs where the utilization of a protected group is less than 80% of Labor Market Availability. We calculate a number approximating the number of full-time employees that would be needed to make utilization equal to the labor market. Where utilization is zero (0), underutilization exists but not to the level of one full-time equivalent employee. Blanks indicate no underutilization.

Underutilization numbers represent specific placement goals as prescribed for federal Affirmative Action Plans. Note that the official underutilization measures are those calculated for the academic discipline, which may comprise more than one department.

Total Minority is comprised of Asian/Hawaiian/Other Pacific Islander, Black/African American, Hispanic/Latino, American Indian/Alaska Native and Two or More Races.

Baruch College

Job Group Faculty-Professorial

Total Faculty: 424

Utilization Report

	Female	Total Minority	Asian/Nat. Haw./Other Pac. Isl.	Black/African Am.	Hispanic/Latino	Italian American
Number of Faculty	165	134	87	18	27	18
Underutilized (Y = Yes)						
Number Underutilized						
Actual Utilization Percent	38.9%	31.6%	20.5%	4.2%	6.4%	4.2%
Labor Market Avail. Percent	42.5%	24.9%	14.0%	4.2%	4.8%	5.3%

Job Group Faculty-Librarian

Total Faculty: 22

Utilization Report

	Female	Total Minority	Asian/Nat. Haw./Other Pac. Isl.	Black/African Am.	Hispanic/Latino	Italian American
Number of Faculty	10	10	6	2	2	2
Underutilized (Y = Yes)	Y					
Number Underutilized	8					
Actual Utilization Percent	45.5%	45.5%	27.3%	9.1%	9.1%	9.1%
Labor Market Avail. Percent	82.8%	13.6%	4.0%	4.4%	3.8%	5.7%

Job Group Faculty-Lecturer

Total Faculty: 61

Utilization Report

	Female	Total Minority	Asian/Nat. Haw./Other Pac. Isl.	Black/African Am.	Hispanic/Latino	Italian American
Number of Faculty	25	14	2	7	5	7
Underutilized (Y = Yes)	Y	Y	Y			
Number Underutilized	7	5	7			
Actual Utilization Percent	41.0%	23.0%	3.3%	11.5%	8.2%	11.5%
Labor Market Avail. Percent	52.4%	31.3%	14.1%	7.7%	7.6%	10.9%

Baruch College

Appendix F provides tables with detail on personnel activities and faculty tenure actions by ethnicity and gender. This first section (F-1) provides detail on personnel activity in the categories noted below, evaluated by job group and by EEO Category.

Detail on selected categories/groups with material levels of activity are published here.

Personnel Action Categories

Action Type	Description
Advancement	Moved to a job title that represents career advancement, whether or not on a published career path. Can be evaluated by sub-categories (Moved to a Higher Title within Group and Moved to a Higher Job Group).
Joined Group - Hire	Employed at the college for the first time, or re-hired after a break in service; includes employees who previously worked at another CUNY College and those appointed through Civil Service Transfer Rosters.
Joined Group - Internal Move	Joined group from another job group. Can be evaluated by sub-categories (Joined from a Higher Job Group, Joined from a Lower Job Group (Advancement), Other Change of Group, or Return to Faculty from Other Title).
Left Group - Internal Move	Left group to move to another job group. Can be evaluated by sub-categories (Move to a Higher Job Group (Advancement), Move to a Lower Job Group, Other Change of Group, or Return to Faculty from Other Title).
Left Group - Separation	Left employment at the college. Includes leaving CUNY entirely (for both voluntary and involuntary reasons) or leaving to take a job at another college, including through Civil Service Transfer Rosters.

EEO Category Summary

Executive/Administrative/Managerial

	Net category Changes	NET ADDITIONS		Additions by Type		NET SUBTRACTIONS		Subtractions by Type		Detail of Transfers or Promotions out of Category				CHANGES WITHIN CATEGORY (not counted in totals)	
		Additions #	Additions %	External Hires (CUNY or College)	Transfers or Promotions into this category	Subtractions #	Subtractions %	Separation (Left College or Left CUNY)	Transfers or Promotions out of this category	Left for a Higher category	Left for a Lower category	Other Change	Returned to Faculty	Advancements	Other Changes
Total	(1)	15		11	4	(16)		(15)	(1)	-	-	-	(1)	3	-
Male	-	7	47%	6	1	(7)	44%	(6)	(1)	-	-	-	(1)	-	-
Female	-	8	53%	5	3	(8)	50%	(8)	-	-	-	-	-	3	-
Other/Unknown	(1)	-	0%	-	-	(1)	6%	(1)	-	-	-	-	-	-	-
Total Min	-	7	47%	6	1	(7)	44%	(7)	-	-	-	-	-	2	-
Asian	-	-	0%	-	-	-	0%	-	-	-	-	-	-	-	-
Black	4	7	47%	6	1	(3)	19%	(3)	-	-	-	-	-	1	-
Hispanic	(4)	-	0%	-	-	(4)	25%	(4)	-	-	-	-	-	1	-
Other Minority	-	-	0%	-	-	-	0%	-	-	-	-	-	-	-	-
Italian-American	2	2	13%	2	-	-	0%	-	-	-	-	-	-	-	-
White (Not Ital)	(3)	6	40%	3	3	(9)	56%	(8)	(1)	-	-	-	(1)	1	-
All White	(1)	8	53%	5	3	(9)	56%	(8)	(1)	-	-	-	(1)	1	-
Unknown	-	-	0%	-	-	-	0%	-	-	-	-	-	-	-	-
Veterans	-	-	0%	-	-	-	0%	-	-	-	-	-	-	-	-
Individuals w/Disabilities	-	-	0%	-	-	-	0%	-	-	-	-	-	-	-	-

This chart summarizes moves of employees into and out of an EEO Job Category, which normally includes more than one job group. Moves between job groups within a category may appear in the "Internal Advancements" column.

EEO Category Summary

Professional Faculty

	Net category Changes	NET ADDITIONS		Additions by Type		NET SUBTRACTIONS		Subtractions by Type		Detail of Transfers or Promotions out of Category				CHANGES WITHIN CATEGORY (not counted in totals)	
		Additions #	Additions %	External Hires (CUNY or College)	Transfers or Promotions into this category	Subtractions #	Subtractions %	Separation (Left College or Left CUNY)	Transfers or Promotions out of this category	Left for a Higher category	Left for a Lower category	Other Change	Returned to Faculty	Advancements	Other Changes
Total	(4)	19		18	1	(23)		(22)	(1)	(1)	-	-	-	12	-
Male	-	11	58%	10	1	(11)	48%	(10)	(1)	(1)	-	-	-	5	-
Female	(4)	8	42%	8	-	(12)	52%	(12)	-	-	-	-	-	7	-
Other/Unknown	-	-	0%	-	-	-	0%	-	-	-	-	-	-	-	-
Total Min	2	8	42%	8	-	(6)	26%	(6)	-	-	-	-	-	4	-
Asian	3	6	32%	6	-	(3)	13%	(3)	-	-	-	-	-	4	-
Black	(1)	2	11%	2	-	(3)	13%	(3)	-	-	-	-	-	-	-
Hispanic	-	-	0%	-	-	-	0%	-	-	-	-	-	-	-	-
Other Minority	-	-	0%	-	-	-	0%	-	-	-	-	-	-	-	-
Italian-American	1	2	11%	2	-	(1)	4%	(1)	-	-	-	-	-	-	-
White (Not Ital)	(7)	9	47%	8	1	(16)	70%	(15)	(1)	(1)	-	-	-	8	-
All White	(6)	11	58%	10	1	(17)	74%	(16)	(1)	(1)	-	-	-	8	-
Unknown	-	-	0%	-	-	-	0%	-	-	-	-	-	-	-	-
Veterans	-	-	0%	-	-	-	0%	-	-	-	-	-	-	-	-
Individuals w/Disabilities	-	-	0%	-	-	-	0%	-	-	-	-	-	-	-	-

This chart summarizes moves of employees into and out of an EEO Job Category, which normally includes more than one job group. Moves between job groups within a category may appear in the "Internal Advancements" column.

EEO Category Summary
Professional Non-Faculty

	Net category Changes	NET ADDITIONS		Additions by Type		NET SUBTRACTIONS		Subtractions by Type		Detail of Transfers or Promotions out of Category				CHANGES WITHIN CATEGORY (not counted in totals)	
		Additions #	Additions %	External Hires (CUNY or College)	Transfers or Promotions into this category	Subtractions #	Subtractions %	Separation (Left College or Left CUNY)	Transfers or Promotions out of this category	Left for a Higher category	Left for a Lower category	Other Change	Returned to Faculty	Advancements	Other Changes
Total	8	31		30	1	(23)		(20)	(3)	(3)	-	-	-	9	-
Male	3	7	23%	7	-	(4)	17%	(4)	-	-	-	-	-	1	-
Female	5	24	77%	23	1	(19)	83%	(16)	(3)	(3)	-	-	-	8	-
Other/Unknown	-	-	0%	-	-	-	0%	-	-	-	-	-	-	-	-
Total Min	7	21	68%	20	1	(14)	61%	(13)	(1)	(1)	-	-	-	8	-
Asian	(3)	3	10%	3	-	(6)	26%	(6)	-	-	-	-	-	1	-
Black	3	8	26%	7	1	(5)	22%	(4)	(1)	(1)	-	-	-	1	-
Hispanic	7	10	32%	10	-	(3)	13%	(3)	-	-	-	-	-	6	-
Other Minority	-	-	0%	-	-	-	0%	-	-	-	-	-	-	-	-
Italian-American	-	-	0%	-	-	-	0%	-	-	-	-	-	-	1	-
White (Not Ital)	1	10	32%	10	-	(9)	39%	(7)	(2)	(2)	-	-	-	-	-
All White	1	10	32%	10	-	(9)	39%	(7)	(2)	(2)	-	-	-	1	-
Unknown	-	-	0%	-	-	-	0%	-	-	-	-	-	-	-	-
Veterans	1	1	3%	1	-	-	0%	-	-	-	-	-	-	-	-
Individuals w/Disabilities	(1)	1	3%	1	-	(2)	9%	(2)	-	-	-	-	-	-	-

This chart summarizes moves of employees into and out of an EEO Job Category, which normally includes more than one job group. Moves between job groups within a category may appear in the "Internal Advancements" column.

EEO Category Summary

Administrative Support Workers

	Net category Changes	NET ADDITIONS		Additions by Type		NET SUBTRACTIONS		Subtractions by Type		Detail of Transfers or Promotions out of Category				CHANGES WITHIN CATEGORY (not counted in totals)	
		Additions #	Additions %	External Hires (CUNY or College)	Transfers or Promotions into this category	Subtractions #	Subtractions %	Separation (Left College or Left CUNY)	Transfers or Promotions out of this category	Left for a Higher category	Left for a Lower category	Other Change	Returned to Faculty	Advancements	Other Changes
Total	(11)	2		2	-	(13)		(12)	(1)	(1)	-	-	-	-	-
Male	(4)	-	0%	-	-	(4)	31%	(4)	-	-	-	-	-	-	-
Female	(7)	2	100%	2	-	(9)	69%	(8)	(1)	(1)	-	-	-	-	-
Other/Unknown	-	-	0%	-	-	-	0%	-	-	-	-	-	-	-	-
Total Min	(10)	1	50%	1	-	(11)	85%	(10)	(1)	(1)	-	-	-	-	-
Asian	(2)	-	0%	-	-	(2)	15%	(2)	-	-	-	-	-	-	-
Black	(6)	1	50%	1	-	(7)	54%	(6)	(1)	(1)	-	-	-	-	-
Hispanic	(2)	-	0%	-	-	(2)	15%	(2)	-	-	-	-	-	-	-
Other Minority	-	-	0%	-	-	-	0%	-	-	-	-	-	-	-	-
<i>Italian-American</i>	-	-	0%	-	-	-	0%	-	-	-	-	-	-	-	-
<i>White (Not Ital)</i>	(1)	1	50%	1	-	(2)	15%	(2)	-	-	-	-	-	-	-
All White	(1)	1	50%	1	-	(2)	15%	(2)	-	-	-	-	-	-	-
Unknown	-	-	0%	-	-	-	0%	-	-	-	-	-	-	-	-
Veterans	-	-	0%	-	-	-	0%	-	-	-	-	-	-	-	-
Individuals w/Disabilities	-	-	0%	-	-	-	0%	-	-	-	-	-	-	-	-

This chart summarizes moves of employees into and out of an EEO Job Category, which normally includes more than one job group. Moves between job groups within a category may appear in the "Internal Advancements" column.

EEO Category Summary

Technicians

	Net category Changes	NET ADDITIONS		Additions by Type		NET SUBTRACTIONS		Subtractions by Type		Detail of Transfers or Promotions out of Category				CHANGES WITHIN CATEGORY (not counted in totals)	
		Additions #	Additions %	External Hires (CUNY or College)	Transfers or Promotions into this category	Subtractions #	Subtractions %	Separation (Left College or Left CUNY)	Transfers or Promotions out of this category	Left for a Higher category	Left for a Lower category	Other Change	Returned to Faculty	Advance-ments	Other Changes
Total	(1)	1		1	-	(2)		(2)	-	-	-	-	-	-	-
Male	(2)	-	0%	-	-	(2)	100%	(2)	-	-	-	-	-	-	-
Female	1	1	100%	1	-	-	0%	-	-	-	-	-	-	-	-
Other/Unknown	-	-	0%	-	-	-	0%	-	-	-	-	-	-	-	-
Total Min	(1)	1	100%	1	-	(2)	100%	(2)	-	-	-	-	-	-	-
Asian	-	1	100%	1	-	(1)	50%	(1)	-	-	-	-	-	-	-
Black	-	-	0%	-	-	-	0%	-	-	-	-	-	-	-	-
Hispanic	(1)	-	0%	-	-	(1)	50%	(1)	-	-	-	-	-	-	-
Other Minority	-	-	0%	-	-	-	0%	-	-	-	-	-	-	-	-
<i>Italian-American</i>	-	-	0%	-	-	-	0%	-	-	-	-	-	-	-	-
<i>White (Not Ital)</i>	-	-	0%	-	-	-	0%	-	-	-	-	-	-	-	-
All White	-	-	0%	-	-	-	0%	-	-	-	-	-	-	-	-
Unknown	-	-	0%	-	-	-	0%	-	-	-	-	-	-	-	-
Veterans	-	-	0%	-	-	-	0%	-	-	-	-	-	-	-	-
Individuals w/Disabilities	-	-	0%	-	-	-	0%	-	-	-	-	-	-	-	-

This chart summarizes moves of employees into and out of an EEO Job Category, which normally includes more than one job group. Moves between job groups within a category may appear in the "Internal Advancements" column.

EEO Category Summary

Craft Workers

	Net category Changes	NET ADDITIONS		Additions by Type		NET SUBTRACTIONS		Subtractions by Type		Detail of Transfers or Promotions out of Category				CHANGES WITHIN CATEGORY (not counted in totals)	
		Additions #	Additions %	External Hires (CUNY or College)	Transfers or Promotions into this category	Subtractions #	Subtractions %	Separation (Left College or Left CUNY)	Transfers or Promotions out of this category	Left for a Higher category	Left for a Lower category	Other Change	Returned to Faculty	Advance-ments	Other Changes
Total	(6)	-		-	-	(6)		(6)	-	-	-	-	2	-	
Male	(5)	-	0%	-	-	(5)	83%	(5)	-	-	-	-	2	-	
Female	(1)	-	0%	-	-	(1)	17%	(1)	-	-	-	-	-	-	
Other/Unknown	-	-	0%	-	-	-	0%	-	-	-	-	-	-	-	
Total Min	-	-	0%	-	-	-	0%	-	-	-	-	-	2	-	
Asian	-	-	0%	-	-	-	0%	-	-	-	-	-	-	-	
Black	-	-	0%	-	-	-	0%	-	-	-	-	-	-	-	
Hispanic	-	-	0%	-	-	-	0%	-	-	-	-	-	2	-	
Other Minority	-	-	0%	-	-	-	0%	-	-	-	-	-	-	-	
Italian-American	(1)	-	0%	-	-	(1)	17%	(1)	-	-	-	-	-	-	
White (Not Ital)	(5)	-	0%	-	-	(5)	83%	(5)	-	-	-	-	-	-	
All White	(6)	-	0%	-	-	(6)	100%	(6)	-	-	-	-	-	-	
Unknown	-	-	0%	-	-	-	0%	-	-	-	-	-	-	-	
Veterans	-	-	0%	-	-	-	0%	-	-	-	-	-	-	-	
Individuals w/Disabilities	-	-	0%	-	-	-	0%	-	-	-	-	-	-	-	

This chart summarizes moves of employees into and out of an EEO Job Category, which normally includes more than one job group. Moves between job groups within a category may appear in the "Internal Advancements" column.

EEO Category Summary

Service Workers and Others

	Net category Changes	NET ADDITIONS		Additions by Type		NET SUBTRACTIONS		Subtractions by Type		Detail of Transfers or Promotions out of Category				CHANGES WITHIN CATEGORY (not counted in totals)	
		Additions #	Additions %	External Hires (CUNY or College)	Transfers or Promotions into this category	Subtractions #	Subtractions %	Separation (Left College or Left CUNY)	Transfers or Promotions out of this category	Left for a Higher category	Left for a Lower category	Other Change	Returned to Faculty	Advancements	Other Changes
Total	(4)	4		4	-	(8)		(8)	-	-	-	-	5	4	
Male	(1)	2	50%	2	-	(3)	38%	(3)	-	-	-	-	4	3	
Female	(3)	2	50%	2	-	(5)	63%	(5)	-	-	-	-	1	1	
Other/Unknown	-	-	0%	-	-	-	0%	-	-	-	-	-	-	-	
Total Min	(5)	3	75%	3	-	(8)	100%	(8)	-	-	-	-	4	3	
Asian	-	-	0%	-	-	-	0%	-	-	-	-	-	-	-	
Black	(1)	3	75%	3	-	(4)	50%	(4)	-	-	-	-	3	2	
Hispanic	(4)	-	0%	-	-	(4)	50%	(4)	-	-	-	-	1	1	
Other Minority	-	-	0%	-	-	-	0%	-	-	-	-	-	-	-	
Italian-American	-	-	0%	-	-	-	0%	-	-	-	-	-	-	-	
White (Not Ital)	1	1	25%	1	-	-	0%	-	-	-	-	-	1	1	
All White	1	1	25%	1	-	-	0%	-	-	-	-	-	1	1	
Unknown	-	-	0%	-	-	-	0%	-	-	-	-	-	-	-	
Veterans	1	1	25%	1	-	-	0%	-	-	-	-	-	-	-	
Individuals w/Disabilities	-	-	0%	-	-	-	0%	-	-	-	-	-	-	-	

This chart summarizes moves of employees into and out of an EEO Job Category, which normally includes more than one job group. Moves between job groups within a category may appear in the "Internal Advancements" column.

Baruch College

Appendix F-2 presents a summary of tenure actions. Tenure is a permanent status awarded on the basis of years of service and/or academic or research achievement.

Faculty in Professorial titles (other than visiting) are eligible for tenure which is awarded based on academic or research achievement and service. College Laboratory Technicians are eligible for tenure based on years of service, and Lecturers are eligible for a Certificate of Continuous Employment (CCE) based on years of service. K-12 Teachers and Counselors are also eligible for tenure.

Tenure is effective on September 1 of each academic year. Individuals listed here were awarded tenure effective September 1, 2019 (during this past plan year).

The Total Minority category is comprised of Asian/Hawaiian/Other Pacific Islander, Black/African American, Hispanic/Latino, American Indian/Alaska Native and Two or More Races.

Baruch College

Allen Aaronson Dept of Mkt/IB

Assc Professor	Gained Tenure	Tenured	Female	Asian/Nat. Haw./Other Pac. Isl.
Lecturer	Gained Tenure	CCE Certificate Continuous Emp	Male	White

Bert Wasserman Dept Eco & Fin

Assc Professor	Gained Tenure	Tenured	Male	Asian/Nat. Haw./Other Pac. Isl.
----------------	---------------	---------	------	---------------------------------

Communication Studies

Assc Professor	Gained Tenure	Tenured	Female	White
Asst Professor	Gained Tenure	Tenured	Male	White

Law

Assc Professor	Gained Tenure	Tenured	Female	White
----------------	---------------	---------	--------	-------

Political Science

Assc Professor	Gained Tenure	Tenured	Male	Asian/Nat. Haw./Other Pac. Isl.
----------------	---------------	---------	------	---------------------------------

Public Affairs

Assc Professor	Gained Tenure	Tenured	Female	Asian/Nat. Haw./Other Pac. Isl.
Professor	Hired with Tenure	Tenured	Male	Asian/Nat. Haw./Other Pac. Isl.

Stan Ross Dept Accountancy

Assc Professor	Gained Tenure	Tenured	Male	Asian/Nat. Haw./Other Pac. Isl.
----------------	---------------	---------	------	---------------------------------

Summary for the College

Total Staff:	Ttl Minority	Asian	Black/AfAm	Hispanic	Ital Amer	White Not Ital	Oth/Unk
4 Female	2	2	0	0	0	2	0
6 Male	4	4	0	0	0	2	0
0 Oth/Unk	0	0	0	0	0	0	0
10 Total	6	6	0	0	0	4	0

Baruch College

This appendix provides detail on searches performed by job group, ethnicity, and gender. Detail is provided on applicants, interviews, and offers. The scope of this report includes searches which officially concluded by a job offer during the previous plan year (June 1, 2019 through May 31, 2020).

Category Summary

Executive-Administrative-Managerial

	Records	Applicant	Appl%	Interview	Int%	Offer	Off%	Hire	Hire%
Total	849	721		80		12		12	
Male	364	331	46%	37	46%	5	42%	5	42%
Female	392	314	44%	36	45%	6	50%	6	50%
Other	93	76	11%	7	9%	1	8%	1	8%
Total Min	474	396	55%	30	38%	6	50%	6	50%
Asian	89	66	9%	6	8%	-	0%	-	0%
Black	206	178	25%	17	21%	5	42%	5	42%
Hispanic/Latino	161	139	19%	6	8%	1	8%	1	8%
Other inc 2 or more	18	13	2%	1	1%	-	0%	-	0%
Italian American	32	29	4%	5	6%	-	0%	-	0%
White (Not Ital)	305	262	36%	44	55%	5	42%	5	42%
All White	337	291	40%	49	61%	5	42%	5	42%
Unknown	38	34	5%	1	1%	1	8%	1	8%
Veterans	34	33	5%	3	4%	-	0%	-	0%
Indiv. w Disabilities	35	30	4%	5	6%	-	0%	-	0%

Category Summary

Professional Faculty

	Records	Applicant	Appl%	Interview	Int%	Offer	Off%	Hire	Hire%
Total	374	369		36		6		6	
Male	196	194	53%	16	44%	4	67%	4	67%
Female	119	118	32%	14	39%	2	33%	2	33%
Other	59	57	15%	6	17%	-	0%	-	0%
Total Min	208	205	56%	21	58%	4	67%	4	67%
Asian	113	110	30%	18	50%	4	67%	4	67%
Black	61	61	17%	1	3%	-	0%	-	0%
Hispanic/Latino	30	30	8%	2	6%	-	0%	-	0%
Other inc 2 or more	4	4	1%	-	0%	-	0%	-	0%
Italian American	10	10	3%	-	0%	-	0%	-	0%
White (Not Ital)	135	133	36%	10	28%	2	33%	2	33%
All White	145	143	39%	10	28%	2	33%	2	33%
Unknown	21	21	6%	5	14%	-	0%	-	0%
Veterans	6	6	2%	1	3%	-	0%	-	0%
Indiv. w Disabilities	13	13	4%	1	3%	-	0%	-	0%

Category Summary

Professional Non-Faculty

	Records	Applicant	Appl%	Interview	Int%	Offer	Off%	Hire	Hire%
Total	3,263	3,089		152		30		29	
Male	941	903	29%	39	26%	6	20%	6	21%
Female	2,004	1,892	61%	102	67%	22	73%	21	72%
Other	290	266	9%	5	3%	2	7%	2	7%
Total Min	2,293	2,167	70%	99	65%	18	60%	17	59%
Asian	510	490	16%	22	14%	4	13%	4	14%
Black	869	831	27%	35	23%	6	20%	6	21%
Hispanic/Latino	813	752	24%	39	26%	8	27%	7	24%
Other inc 2 or more	101	94	3%	3	2%	-	0%	-	0%
Italian American	100	96	3%	5	3%	1	3%	1	3%
White (Not Ital)	723	684	22%	39	26%	9	30%	9	31%
All White	823	780	25%	44	29%	10	33%	10	34%
Unknown	147	142	5%	9	6%	2	7%	2	7%
Veterans	37	36	1%	1	1%	1	3%	1	3%
Indiv. w Disabilities	137	136	4%	4	3%	1	3%	1	3%

Category Summary

Administrative Support Workers

	Records	Applicant	Appl%	Interview	Int%	Offer	Off%	Hire	Hire%
Total	148	148		6		1		1	
Male	89	89	60%	4	67%	1	100%	1	100%
Female	40	40	27%	1	17%	-	0%	-	0%
Other	19	19	13%	1	17%	-	0%	-	0%
Total Min	125	125	84%	5	83%	1	100%	1	100%
Asian	19	19	13%	-	0%	-	0%	-	0%
Black	70	70	47%	4	67%	-	0%	-	0%
Hispanic/Latino	34	34	23%	1	17%	1	100%	1	100%
Other inc 2 or more	2	2	1%	-	0%	-	0%	-	0%
Italian American	2	2	1%	-	0%	-	0%	-	0%
White (Not Ital)	12	12	8%	1	17%	-	0%	-	0%
All White	14	14	9%	1	17%	-	0%	-	0%
Unknown	9	9	6%	-	0%	-	0%	-	0%
Veterans	3	3	2%	-	0%	-	0%	-	0%
Indiv. w Disabilities	6	6	4%	1	17%	-	0%	-	0%

Category Summary

Craft Workers

	Records	Applicant	Appl%	Interview	Int%	Offer	Off%	Hire	Hire%
Total	58	58		8		1		1	
Male	42	42	72%	7	88%	1	100%	1	100%
Female	2	2	3%	-	0%	-	0%	-	0%
Other	14	14	24%	1	13%	-	0%	-	0%
Total Min	27	27	47%	2	25%	-	0%	-	0%
Asian	3	3	5%	-	0%	-	0%	-	0%
Black	12	12	21%	1	13%	-	0%	-	0%
Hispanic/Latino	10	10	17%	1	13%	-	0%	-	0%
Other inc 2 or more	2	2	3%	-	0%	-	0%	-	0%
Italian American	4	4	7%	-	0%	-	0%	-	0%
White (Not Ital)	22	22	38%	6	75%	1	100%	1	100%
All White	26	26	45%	6	75%	1	100%	1	100%
Unknown	5	5	9%	-	0%	-	0%	-	0%
Veterans	3	3	5%	1	13%	-	0%	-	0%
Indiv. w Disabilities	1	1	2%	-	0%	-	0%	-	0%

Category Summary

Service Workers and Others

	Records	Applicant	Appl%	Interview	Int%	Offer	Off%	Hire	Hire%
Total	84	84		11		2		2	
Male	49	49	58%	8	73%	2	100%	2	100%
Female	18	18	21%	2	18%	-	0%	-	0%
Other	17	17	20%	1	9%	-	0%	-	0%
Total Min	67	67	80%	9	82%	2	100%	2	100%
Asian	1	1	1%	-	0%	-	0%	-	0%
Black	34	34	40%	5	45%	1	50%	1	50%
Hispanic/Latino	28	28	33%	4	36%	1	50%	1	50%
Other inc 2 or more	4	4	5%	-	0%	-	0%	-	0%
Italian American	1	1	1%	-	0%	-	0%	-	0%
White (Not Ital)	10	10	12%	-	0%	-	0%	-	0%
All White	11	11	13%	-	0%	-	0%	-	0%
Unknown	6	6	7%	2	18%	-	0%	-	0%
Veterans	3	3	4%	1	9%	1	50%	1	50%
Indiv. w Disabilities	3	3	4%	-	0%	-	0%	-	0%